



MASTER LEDtube T8 Ultra Efficient



MAS LEDtube 1200mm UE 13.5W 840 T8

With energy prices rising and the EU's Green Deal² continuing to fund energy efficient building renovations, many are looking into make their company's lighting more sustainable. The new Philips MASTER LEDtube Ultra Efficient T8 is a true breakthrough on the way to more sustainable lighting. It replaces your current fluorescent tube or LED tube directly and offers immediately great energy cost reduction as well as a much longer lifetime!

Product data

General Information	
Cap-Base	G13 ROT
Nominal lifetime	75,000 hour(s)
Switching Cycle	200,000
Lighting Technology	LED
Flux measurement reference	Sphere
CE mark	Yes
EU RoHS compliant	Yes

Light Technical	
Color Code	840 [CCT of 4000K]
Beam Angle (Nom)	160 degree(s)
Luminous Flux	2,500 lm
Color Designation	Cool White (CW)
Correlated Color Temperature (Nom)	4000 K
Luminous Efficacy (rated) (Nom)	185 lm/W
Color Consistency	<6
Color rendering index (CRI)	80
LLMF At End Of Nominal Lifetime (Nom)	70 %

Flickering value (PstLM) - Flickering value as per EN 61000-3-3	0.5
Stroboscopic effect visibility measure (SVM)	0.2
Photobiological safety according to EN 62471	RG0

Operating and Electrical	
Line Frequency	50 to 60 Hz
Input Frequency	50 to 60 Hz
Power Consumption	13.5 W
Lamp Current (Max)	69 mA
Lamp Current (Min)	56 mA
Starting Time (Nom)	0.5 s
Warm-up time to 60% light	0.5 s
Power Factor (Fraction)	0.9
Voltage (Nom)	220-240 V
LED alternative to fluorescent lamp power	36 W
Inrush current at mains	3.87
Max. lamp no. on MCB B type 10A - Mains	110

MASTER LEDtube T8 Ultra Efficient

Max. lamp no. on MCB B type 10A – EM ballast without Comp. Cap.	110
Max. lamp no. on MCB B type 10A – EM ballast with Comp. Cap.	15
Max. lamp no. on MCB B type 16A – Mains	175
Max. lamp no. on MCB B type 16A – EM ballast without Comp. Cap.	175
Max. lamp no. on MCB B type 16A – EM ballast with Comp. Cap.	25
Ballast Compatibility	EM/Mains

Temperature

Ambient temperature range	-20 °C to 45 °C
T-Case Maximum (Nom)	55 °C

Controls and Dimming

Dimmable	No
----------	----

Mechanical and Housing

Bulb Finish	Frosted
Bulb Material	Plastic
Product Length	1,200 mm
Bulb Shape	T8

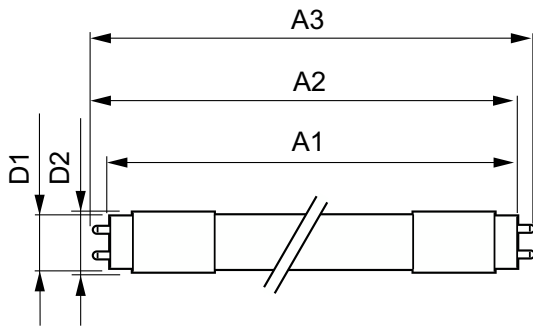
Approval and Application

Energy Efficiency Class	B
Energy Saving Product	Yes
Approval Marks	RoHS compliance TUV CE marking KEMA Keur certificate
Energy Consumption kWh/1000 h	14 kWh
EPREL Registration Number	1205540

Product Data

Order product name	MAS LEDtube 1200mm UE 13.5W 840 T8
Full product name	MAS LEDtube 1200mm UE 13.5W 840 T8
Full product code	871951433972900
Order code	929003067002
Material Nr. (12NC)	929003067002
Numerator - Quantity Per Pack	1
EAN/UPC - Product/Case	8719514339729
Numerator - Packs per outer box	10
EAN/UPC - Case	8719514339736

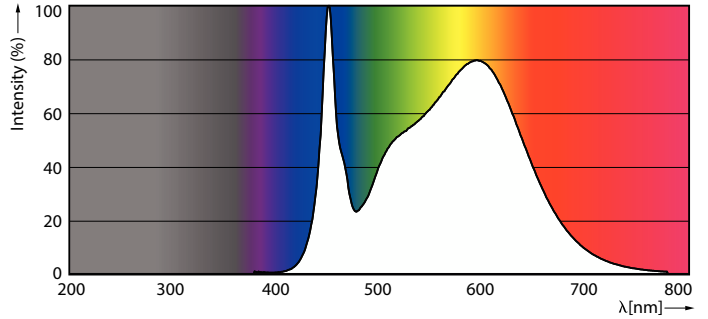
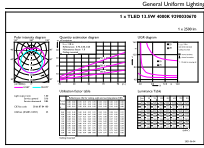
Dimensional drawing



Product	D1	D2	A1	A2	A3
MAS LEDtube 1200mm UE 13.5W 840 T8	25.8 mm	28 mm	1,198.2 mm	1,205.3 mm	1,212.4 mm

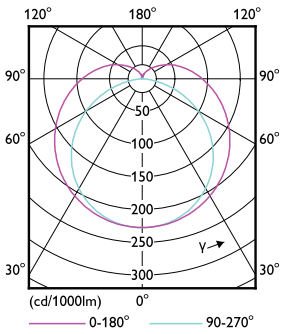
MASTER LEDtube T8 Ultra Efficient

Photometric data



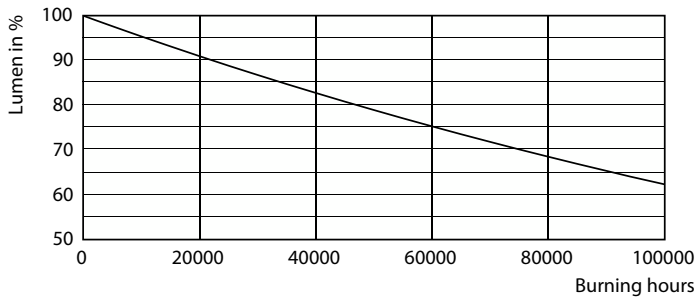
General uniform lighting - MAS LEDtube 1200mm UE 13.5W 840 T8

Spectral Power Distribution Colour - MAS LEDtube 1200mm UE 13.5W 840 T8

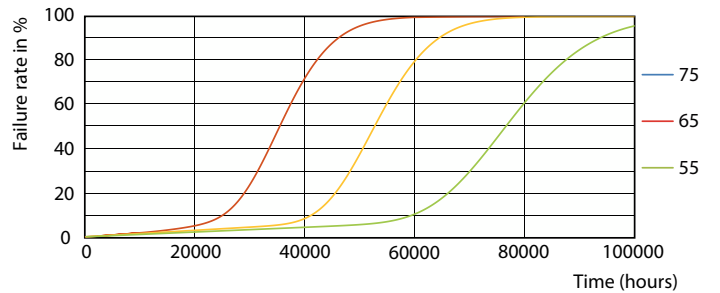


Light Distribution Diagram - MAS LEDtube 1200mm UE 13.5W 840 T8

Lifetime



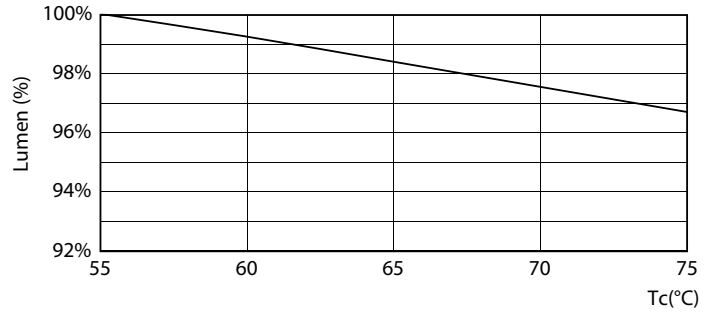
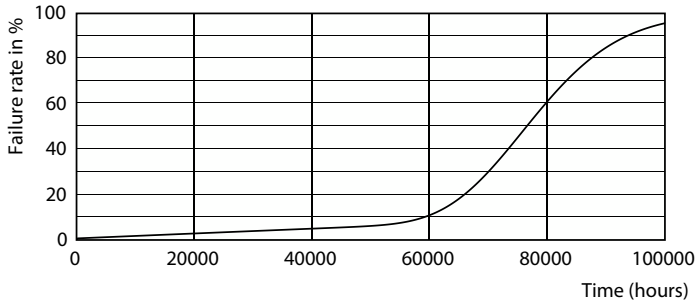
Lumen Maintenance Diagram - MAS LEDtube 1200mm UE 13.5W 840 T8



Life Expectancy Diagram - MAS LEDtube 1200mm UE 13.5W 840 T8

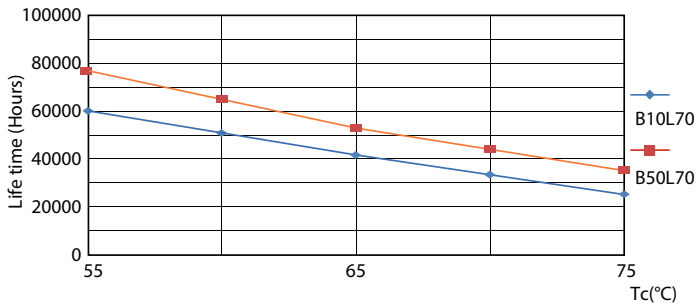
MASTER LEDtube T8 Ultra Efficient

Lifetime



Life Expectancy Diagram - MAS LEDtube 1200mm UE 13.5W 840 T8

Lumen Maintenance Diagram - MAS LEDtube 1200mm UE 13.5W 840 T8



Life Expectancy Diagram - MAS LEDtube 1200mm UE 13.5W 840 T8

