



CorePro LEDspot Reflectors

CoreProLEDspot ND2.8-40W R50 E14 827 36D

CorePro LEDspots Reflectors are a perfect fit for spot lighting and deliver warm halogen-like light. They are compatible with most existing fixtures with a GU10 or E27 base and are designed as a retrofit replacement for halogen or incandescent spots. CorePro LEDspots Reflectors deliver significant energy savings and minimize maintenance cost.

Product data

General Information	
Cap-Base	E14 [E14]
Nominal lifetime	15,000 hour(s)
Switching Cycle	50,000
Lighting Technology	LED
Flux measurement reference	Narrow Cone
Light Technical	
Color Code	827 [CCT of 2700K]
Beam Angle (Nom)	36 degree(s)
Luminous Flux	210 lumen
Luminous Intensity (Nom)	400 cd
Color Designation	Warm White (WW)
Correlated Color Temperature (Nom)	2700 K
Luminous Efficacy (rated) (Nom)	75.00 lm/W
Color Consistency	<6
Color rendering index (CRI)	80
LLMF At End Of Nominal Lifetime (Nom)	70 %
Luminous Flux in 90° Cone (Rated)	210 lumen

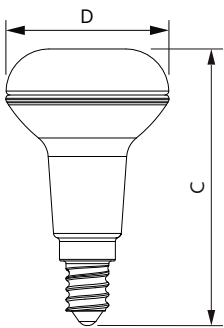
Operating and Electrical	
Line Frequency	50 to 60 Hz
Input Frequency	50 to 60 Hz
Power Consumption	2.8 W
Lamp Current (Nom)	23 mA
Wattage Equivalent	40 W
Starting Time (Nom)	0.1 s
Warm-up time to 60% light	0.1 s
Power Factor (Fraction)	0.5
Voltage (Nom)	220-240 V
Temperature	
T-Case Maximum (Nom)	57 °C
Controls and Dimming	
Dimmable	No
Mechanical and Housing	
Bulb Finish	Clear

CorePro LEDspot Reflectors

Bulb Shape	R50 [R 50mm]
Approval and Application	
Suitable For Accent Lighting	Yes
Energy Consumption kWh/1000 h	3 kWh
EPREL Registration Number	397,641
CE mark	Yes
EU RoHS compliant	Yes
Product Data	
Full product code	871869681175700

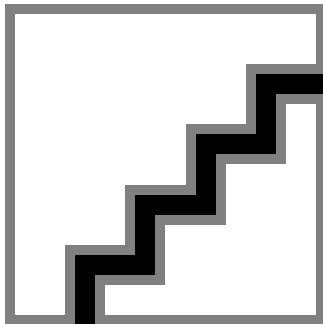
Order product name	CoreProLEDspot ND2.8-40W R50 E14 827 36D
Order code	929001891102
Numerator - Quantity Per Pack	1
Numerator - Packs per outer box	6
Material number (12NC)	929001891102
Full product name	CoreProLEDspot ND2.8-40W R50 E14 827 36D
EAN/UPC - Case	8718696811764

Dimensional drawing

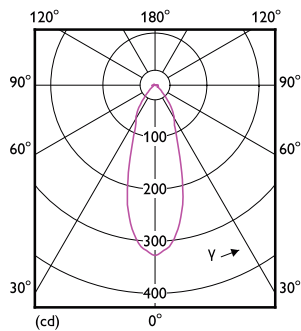


Product	D	C
CoreProLEDspot ND2.8-40W R50 E14 827 36D	50 mm	84 mm

Photometric data



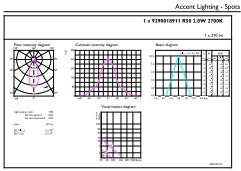
Spectral Power Distribution Colour - CoreProLEDspot ND2.8-40W R50 E14 827 36D



Light Distribution Diagram - CoreProLEDspot ND2.8-40W R50 E14 827 36D

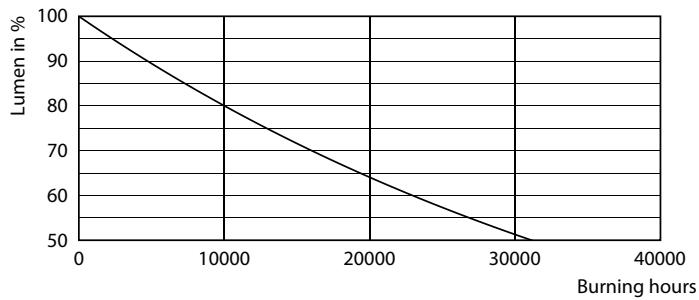
CorePro LEDspot Reflectors

Photometric data

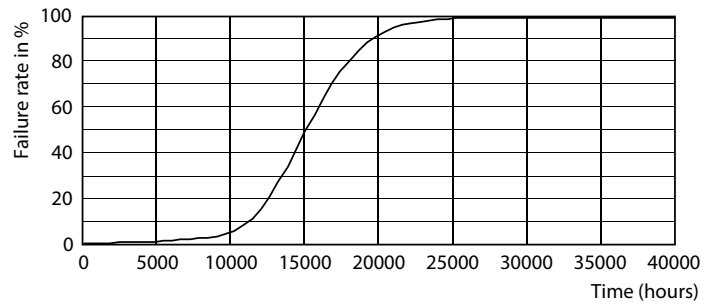


© 2023 Philips Lighting B.V. Philips Lighting B.V. Page 11

Lifetime



Lumen Maintenance Diagram - CoreProLEDspot ND2.8-40W R50 E14 827 36D



Life Expectancy Diagram - CoreProLEDspot ND2.8-40W R50 E14 827 36D

