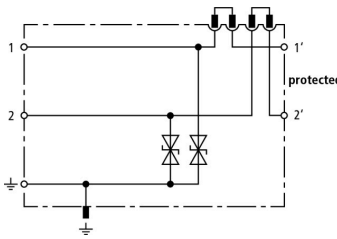


DCO SD2 E 24 (917 988)

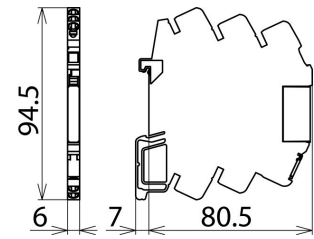
- Space-saving terminal block with integrated surge protection
- Disconnection module for disconnecting signal circuits for maintenance work
- For installation in conformity with the lightning protection zone concept at the boundaries from 1 –2 and higher



Figure without obligation



Basic circuit diagram DCO SD2 E 24



Dimension drawing DCO SD2 E 24

Finely-limiting surge protective device with disconnection function and powerful diodes to earth for two single lines sharing a common reference potential and unbalanced interfaces.

Type	DCO SD2 E 24
Part No.	917 988
SPD class	TYPE 3 Pt
Nominal voltage (U _N)	24 V
Max. continuous operating voltage (d.c.) (U _C)	28 V
Max. continuous operating voltage (a.c.) (U _C)	19.5 V
Nominal current at 60 °C (I _N)	10 A
C1 Total nominal discharge current (8/20 μs) (I _n)	0.6 kA
C1 Nominal discharge current (8/20 μs) per line (I _n)	0.3 kA
Voltage protection level line-line for I _n C1 (U _p)	≤ 96 V
Voltage protection level line-PG for I _n C1 (U _p)	≤ 48 V
Voltage protection level line-line at 1 kV/μs C3 (U _p)	≤ 76 V
Voltage protection level line-PG at 1 kV/μs C3 (U _p)	≤ 38 V
Cut-off frequency line-PG (f _c)	5.5 MHz
Capacitance line-line (C)	≤ 0.55 nF
Capacitance line-PG (C)	≤ 1.1 nF
Operating temperature range (T _U)	-40 °C ... +80 °C
Degree of protection	IP 20
For mounting on	35 mm DIN rails acc. to EN 60715
Connection (input / output)	spring / spring
Cross-sectional area (solid)	0.34-2.5 mm ²
Cross-sectional area (flexible)	0.34-2.5 mm ²
Earthing via	DIN rail / terminal
Enclosure material	polyamide PA 6.6
Colour	yellow
Test standards	IEC 61643-21 / EN 61643-21
Approvals	UL, CSA, SIL
SIL classification	up to SIL3 ^{*)}
Weight	25 g
Customs tariff number	85363010
GTIN	4013364150652
PU	1 Stk

^{*)} For more detailed information, please visit www.dehn-international.com.

We reserve the right to introduce changes in performance, configuration and technology, dimensions, weights and materials in the course of technical progress. The figures are shown without obligation.