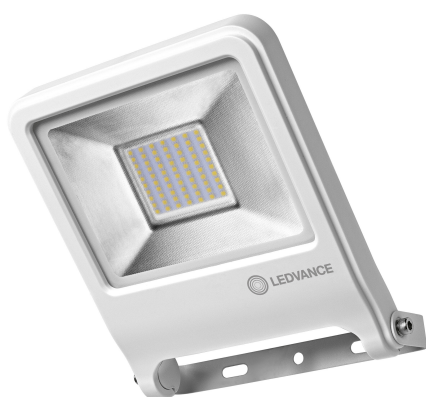


# PRODUCT DATASHEET

## ENDURA Flood 50 W 3000 K WT

ENDURA® FLOOD Warm White | Outdoor luminaires in 3000K



### Areas of application

- Outdoor
- Replacement for floodlights with halogen lamps
- Garages
- Building facades

### Product benefits

- Quick and simple installation thanks to low profile, compact and light weight design
- Energy savings of up to 80 % compared to halogen lamp floodlights
- Semi-frosted, tempered glass cover for uniform illumination

### Product features

- Very bright and functional outdoor LED luminaires
- Symmetrical beam angle: 110° x 110°
- Mounting bracket for up to 180° tilting
- Type of protection: IP65
- Ambient temperature in operation: -20...+45 °C
- Available in two housing colors: white and dark gray
- Connection via 1 m cable, wiring required



## TECHNICAL DATA

### Electrical data

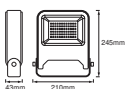
Nominal wattage	50.00 W
Nominal voltage	220...240 V
Mains frequency	50...60 Hz
Nominal current	220.000 mA
Max. number of luminaires per miniature circuit breaker B16	139
Max. number of luminaires per miniature circuit breaker C16	139
Power factor $\lambda$	> 0.90
Total harmonic distortion	< 20 %
Protection class	I

### Photometrical data

Luminous flux	4500 lm
Luminous efficacy	90 lm/W
Color temperature	3000 K
Light color (designation)	Warm White
Color rendering index Ra	$\geq 80$
Standard deviation of color matching	6 sdc <sub>m</sub>
Flickering metric (Pst LM)	-
Stroboscope effect metric (SVM)	-
Photobiological safety group acc. to EN62778	RG1
Beam angle	120 °

### Dimensions & Weight

Length	245.00 mm
Width	210.00 mm
Height	43.00 mm
Product weight	1070.00 g



ENDURA FLOOD 50W

## Materials & Colors

Product color	White
Housing color	White
Body material	Aluminum
Mercury content	0.0 mg

## Application & Mounting

Ambient temperature range	-20...+45 °C
Temperature range at storage	-30...+70 °C
Type of connection	Cable, 3-pole
Type of protection	IP65
Protection class IK (shock resistance)	IK06
Dimmable	No
Mounting type	Surface
Mounting location	Wall
Application environment	Outdoor
With light source	Yes

## Lifespan

Number of switching cycles	15000
----------------------------	-------





## Certificates & Standards

Standards	CE / EAC / UKCA
Luminaire with limited surface temperature, "D sign"	No
Replaceable light source (EPREL)	Not replaceable

## Safety advice

- All electrical connections must be made by a qualified person.
- Caution, risk of electric shock.
- Product in protection class I. All electrically conductive, metallic housing parts that can absorb voltage during operation or during maintenance in the event of a fault must be continuously connected to the protective earthing conductor.
- To reduce the risk of strangulation the flexible wiring connected to this luminaire shall be effectively fixed to the wall if the wiring is within arm's reach.

## DOWNLOAD DATA

Documents and certificates		Document name
	User instruction / safety instructions	ENDURA FLOOD
	Legal information	OUTDOOR LUMINAIRES
	Declarations of conformity	ENDURA FLOODLIGHT
	Declarations of conformity UKCA	FLOODLIGHT

## LOGISTICAL DATA

Product code	Packaging unit (Pieces/Unit)	Dimensions (length x width x height)	Gross weight	Volume
4058075239678	Folding box 1	60 mm x 216 mm x 259 mm	1139.00 g	3.36 dm <sup>3</sup>
4058075239685	Shipping box 8	445 mm x 250 mm x 280 mm	9542.00 g	31.15 dm <sup>3</sup>

The mentioned product code describes the smallest quantity unit which can be ordered. One shipping unit can contain one or more single products. When placing an order, for the quantity please enter single or multiples of a shipping unit.

## DISCLAIMER

Subject to change without notice. Errors and omission excepted. Always make sure to use the most recent release.