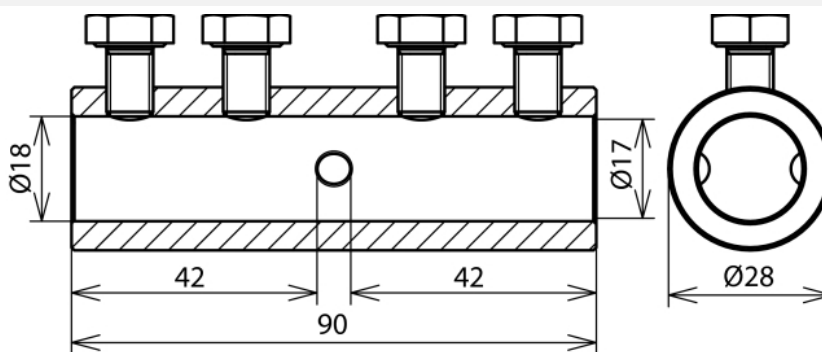


## VM 16 SKM8X12 AL (385 216)



Figure without obligation



Connecting sleeve with embossings (stop boss) to assemble longer (Rd16mm) air-termination rods (transport length), with four M8 screws (self-locking).

Arrangement:



| Type  | VM 16 SKM8X12 AL    |
|---|---------------------|
| Part No.  | 385 216             |
| Material  | Al                  |
| Clamping range Rd / Rd                            | 16 / 16 mm          |
| Screw   | ⚙ M8 x 12 mm        |
| Material of screw                                 | StSt                |
| Outside diameter Ø                                | 28 mm               |
| Lightning current carrying capability (10/350 µs) | 100kA <sup>*)</sup> |
| Standard  | EN 62561-1          |
| Weight  | 133 g               |
| Customs tariff number                             | 85389099            |
| GTIN  | 4013364100565       |
| PU  | 10 Stk              |

<sup>\*)</sup> For exact assignment see test certificate.

We reserve the right to introduce changes in performance, configuration and technology, dimensions, weights and materials in the course of technical progress. The figures are shown without obligation.