



CorePro LED PLL

CorePro LED PLL EM/Mains 8W 830 4P

Philips CorePro LED PLL is the ideal uplampping solution for downlights & luminaires in a wide range of general lighting applications. It integrates a LED light source into a traditional fluorescent form factor to offer superb energy savings over a lifetime that's twice as long as fluorescent alternatives.

Product data

General Information	
Cap-Base	2G11 [2G11]
EU RoHS compliant	Yes
Nominal lifetime	30,000 hour(s)
Switching Cycle	200,000
Lighting Technology	LED
Flux measurement reference	Sphere
Brand	Philips

Light Technical	
Color Code	830 [CCT of 3000K]
Beam Angle (Nom)	160 degree(s)
Luminous Flux	960 lumen
Color Designation	White (WH)
Correlated Color Temperature (Nom)	3000 K
Luminous Efficacy (rated) (Nom)	120 lm/W
Color Consistency	<6
Color rendering index (CRI)	80
LLMF At End Of Nominal Lifetime (Nom)	70 %

Operating and Electrical	
Line Frequency	50 to 60 Hz
Input Frequency	50 to 60 Hz

Power Consumption	8 W
Lamp Current (Nom)	42 mA
Starting Time (Nom)	0.5 s
Warm-up time to 60% light	0.5 s
Power Factor (Fraction)	0.9
Voltage (Nom)	220-240 V

Temperature	
Ambient temperature range	-20 °C to 45 °C
T-Case Maximum (Nom)	70 °C

Controls and Dimming	
Dimmable	No

Mechanical and Housing	
Bulb Finish	Frosted
Bulb Material	Glass
Product Length	200 mm
Bulb Shape	Tube, single-ended

Approval and Application	
Energy Saving Product	Yes

CorePro LED PLL

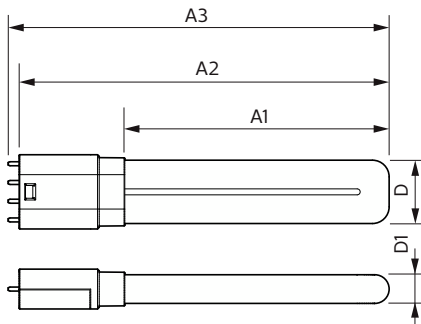
Approval Marks	RoHS compliance TUV CE marking KEMA Keur certificate
Energy Consumption kWh/1000 h	8 kWh
EPREL Registration Number	1,370.823

Product Data

Full product code	872016915699900
Order product name	CorePro LED PLL EM/Mains 8W 830 4P
Order code	929003592202

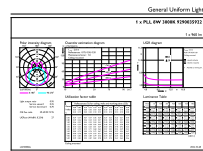
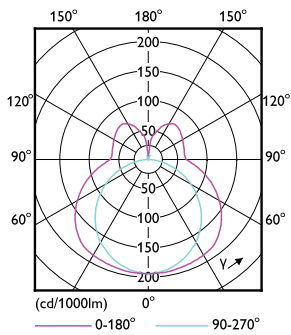
Numerator - Quantity Per Pack	1
Numerator - Packs per outer box	10
Material number (12NC)	929003592202
Net weight	0.085 kg
Full product name	CorePro LED PLL EM/Mains 8W 830 4P
EAN/UPC - Case	8720169157002

Dimensional drawing

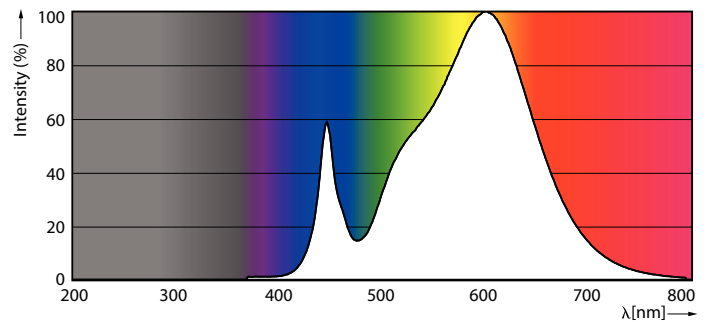


Product	D1	D2	A1	A2	A3
CorePro LED PLL EM/Mains 8W 830 4P	17 mm		156 mm	218 mm	224 mm

Photometric data



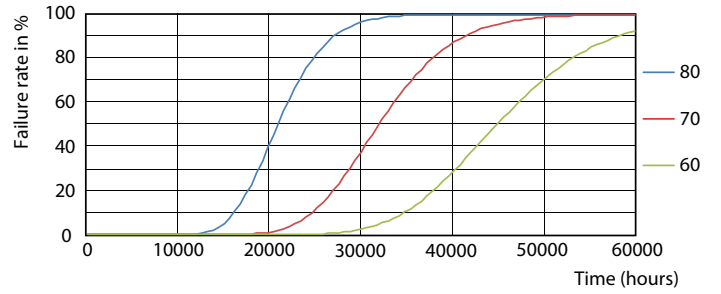
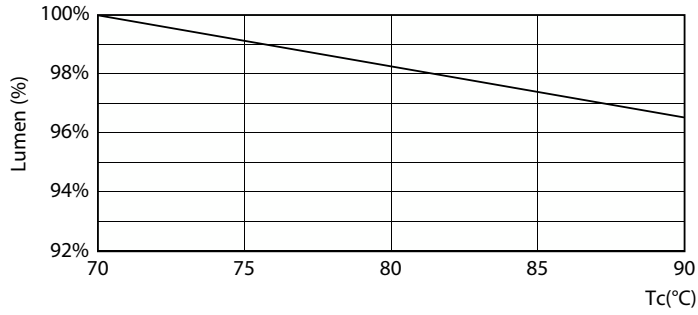
Light Distribution Diagram



Spectral Power Distribution Colour

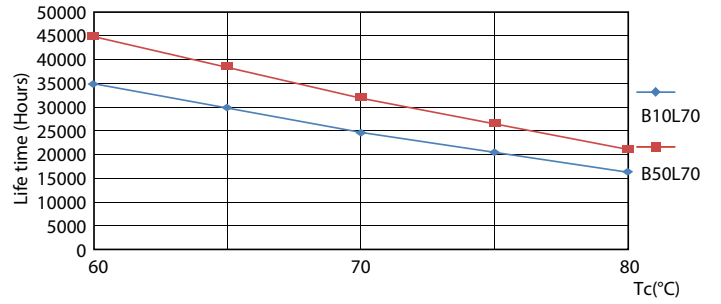
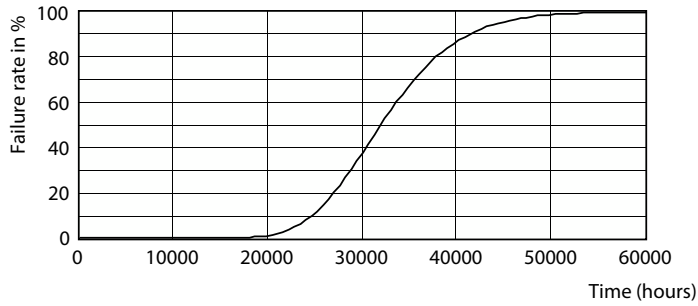
CorePro LED PLL

Lifetime



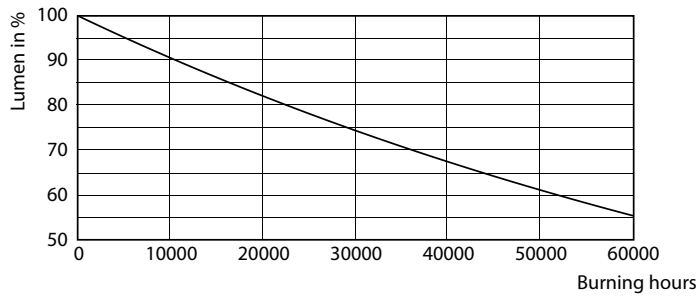
Lumen Maintenance Diagram

Life Expectancy Diagram



Life Expectancy Diagram - CorePro LED PLL EM/Mains 8W 830 4P

Life Expectancy Diagram



Lumen Maintenance Diagram - CorePro LED PLL EM/Mains 8W 830 4P

CorePro LED PLL

