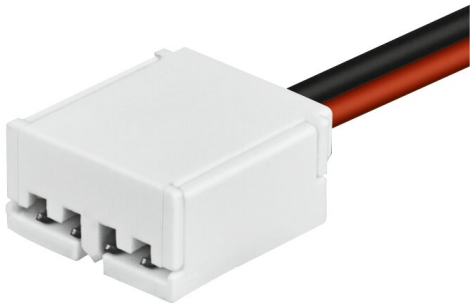


PRODUCT DATASHEET FX -SC08-G2-CT2PF-0500

LINEARlight FLEX® Tunable White | – Flex accessories



Product benefits

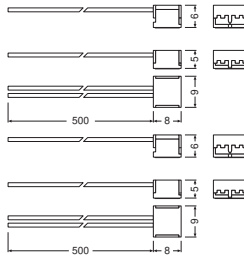
- Simple installation, no tools or soldering required (CONNECTsystem)
- Reduced installation time (CONNECTsystem)
- Low profile
- Extremely vibration-proof (CONNECTsystem)
- Robust connection
- Can be connected to the front of the module or at division points (CONNECTsystem)

Product features

- Quick and easy installation
- Compatible with Linearlight Flex
- Compatible with TEC Flex

TECHNICAL DATA

Dimensions & Weight



Length	510 mm
Width	9.2 mm
Height	5.9 mm
Product weight	5.3 g

DOWNLOAD DATA

LOGISTICAL DATA

Product code	Packaging unit (Pieces/Unit)	Dimensions (length x width x height)	Gross weight	Volume
4052899464735	Unpacked 1		5.30 g	
4052899464742	Folding box 20		310.00 g	
4052899464759	Shipping box 280	510 mm x 340 mm x 315 mm	4146.00 g	54.62 dm ³

The mentioned product code describes the smallest quantity unit which can be ordered. One shipping unit can contain one or more single products. When placing an order, for the quantity please enter single or multiples of a shipping unit.

DISCLAIMER

Subject to change without notice. Errors and omission excepted. Always make sure to use the most recent release.