

# WLD+40011\_DALI

WLD+40011\_DALI

---



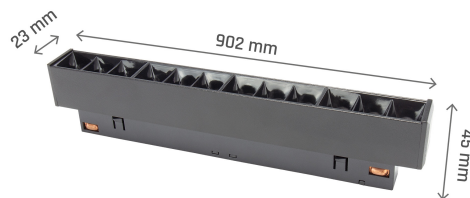
---

Power	<b>12 W</b>	Voltage	<b>48 V</b>
Colour temperature	<b>3000 K</b>	Colour of light	<b>WW</b>
Beam angle	<b>35 °</b>	UGR	<b>&lt;19</b>
Degree of protection (IP)	<b>IP20</b>		

---


## Technical data

Code	WLD+40011_DALI
Power	12 W
Nominal current	263 mA
Voltage	48 V
Energy consumption	12 kWh/1000h
Frequency	DC Hz
Protection class	III
Manufacturer of power supply	tuobo
Power factor	1
Useful luminous flux*	1200 lm (360°)
Luminous flux**	820 lm (360°)
Lamp efficacy	100 lm/W
Luminous intensity	2580 cd
Colour temperature	3000 K
Colour of light	WW
Beam angle	35 °
UGR	<19
RA	>90
Light source included	Yes
Producer of LED diodes	osram
Uniformity of color SDCM max	5
Dimmable	DALI
Working temperature range	-20 to +40 °
Lifespan	50000 h
Housing material	AL+PC
Degree of protection (IP)	IP20
Colour	Black
Dimension (AxBxC)	204x23x42 mm
For use	Inside
Assembly method	NA SZYŃE
Application	Inside
Made in	PRC
Other	DALI ,



## Related documents



 Declaration of Conformity

