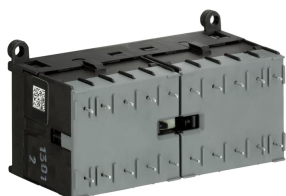


PRODUCT-DETAILS

VB7A-30-10-P-01

VB7A-30-10-P-01 Mini Reversing Contactor 24 V AC - 3 NO - 0 NC - Soldering Pins



General Information

Extended Product Type	VB7A-30-10-P-01
Product ID	GJL1311919R0101
EAN	4013614157493
Catalog Description	VB7A-30-10-P-01 Mini Reversing Contactor 24 V AC - 3 NO - 0 NC - Soldering Pins
Long Description	The VB7A-30-10-P mini reversing contactor is a compact 3 pole contactor with 1 auxiliary contact, soldering pins and mechanical interlock and safety blocking. They are ideally suited for applications where reliability is a must and space is at a premium. Mini reversing contactors are used in residential buildings, commercial buildings and industrial applications for the control of three-phase motor loads up to 5.5 kW (AC-3). Further features are the silent coil, a switch position indication and the integrated possibility for rail mounting.

Ordering

Minimum Order Quantity	1 piece
Customs Tariff Number	85365080

Popular Downloads

Data Sheet, Technical Information	1SBC100214C0202
Instructions and Manuals	2CDC102046M6801
CAD Dimensional Drawing	2CDC001079B0201

Dimensions

Product Net Width	96.2 mm
Product Net Height	57.5 mm
Product Net Depth / Length	47.7 mm
Product Net Weight	0.345 kg

Technical

Number of Poles	3
Rated Operational Voltage	Auxiliary Circuit 690 V AC Auxiliary Circuit 250 V DC Main Circuit 690 V AC Main Circuit 220 V DC
Rated Frequency (f)	Main Circuit 60 Hz Main Circuit 50 Hz Main Circuit DC
Rated Impulse Withstand Voltage (U_{imp})	Main Circuit 6 kV
Rated Insulation Voltage (U_i)	690 V acc. to UL/CSA 600 V
Number of Main Contacts NC	0
Number of Main Contacts NO	3
Rated Operational Current AC-1 (I_e)	(220 / 240 V) 40 °C 12 A (220 / 240 V) 55 °C 12 A (380 / 440 V) 40 °C 12 A (380 / 440 V) 55 °C 12 A (690 V) 40 °C 6 A (690 V) 55 °C 6 A
Rated Operational Power AC-3 (P_e)	(230 V) Three Phase 3 kW (400 V) Three Phase 5.5 kW (500 V) Three Phase 5.5 kW (690 V) Three Phase, NO 3 kW
Rated Short-time Withstand Current Low Voltage (I_{cW})	at 40 °C Ambient Temp, in Free Air, from a Cold State 10 s 96 A
Number of Auxiliary Contacts NC	0
Number of Auxiliary Contacts NO	1
Conventional Free-air Thermal Current (I_{th})	Main Circuit 12 A
Rated Control Circuit Voltage (U_c)	24 V AC
Coil Operating Limits	(acc. to IEC 60947-4-1) for AC supply 0.85 ... 1.1 x U_c (at $\theta \leq 55$ °C)
Degree of Protection	Main Circuit Terminals IP20
Pollution Degree	3
Mechanical Durability	10000000 cycle
Minimum Switching Capacity	Auxiliary Circuit 17 V Auxiliary Circuit 5 mA
Maximum Electrical Switching Frequency	(AC-1) 300 cycles per hour (AC-15) 600 cycles per hour (AC-3) 600 cycles per hour (DC-1) 600 cycles per hour (DC-13) 600 cycles per hour (DC-3) 600 cycles per hour

Mounting on DIN Rail	TH35-15 (35 x 15 mm Mounting Rail) acc. to IEC 60715 TH35-7.5 (35 x 7.5 mm Mounting Rail) acc. to IEC 60715
Power Loss	at Rated Operating Conditions per Pole 2 W at Rated Operating Conditions AC-1 per Pole 1.4 W
Standards	IEC/EN 60947-1 IEC/EN 60947-4-1 IEC/EN 60947-5-1 UL 60947-1 UL 60947-4-1

Technical UL/CSA

Maximum Operating Voltage UL/CSA	Main Circuit 600 V AC
Full Load Amps Motor Use	(115 V AC) Single Phase 13.8 A (200 V AC) Three Phase 7.8 A (220 ... 240 V AC) Three Phase 9.6 A (230 V AC) Single Phase 10 A (440 ... 480 V AC) Three Phase 7.6 A (550 ... 600 V AC) Three Phase 6.1 A
Horsepower Rating UL/CSA	(115 V AC) Single Phase 0.75 Hp (200 V AC) Three Phase 2 Hp (220 ... 240 V AC) Three Phase 3 Hp (230 V AC) Single Phase 1.5 Hp (440 ... 480 V AC) Three Phase 5 Hp (550 ... 600 V AC) Three Phase 5 Hp
General Use Rating UL/CSA	(600 V AC) 12 A
Contact Rating UL/CSA	A600

Environmental

Ambient Air Temperature	Operation -20 ... +55 °C Storage -40 ... +80 °C
Maximum Operating Altitude Permissible	2000 m
Resistance to Shock acc. to IEC 60068-2-27	11 ms Pulse 15g
Resistance to Vibrations acc. to IEC 60068-2-6	5g / 5 ... 150 Hz
RoHS Status	Following EU Directive 2011/65/EU and Amendment 2015/863 July 22, 2019

Certificates and Declarations

CB Certificate	1SAA938000-2002
CQC Certificate	CQC2003010304064033
cURus Certificate	cUL_E191658
Declaration of Conformity - CCC	2020980304001854
Declaration of Conformity - CE	1SAD101100-3101
Declaration of Conformity - UKCA	1SAD201100-3101
DNV GL Certificate	1SAA938000-0306
EAC Certificate	1SAA920000-2702
KC Certificate	1SAA938000-1501
RMRS Certificate	1SAA938000-0704
UL Certificate	E191658-19880915

Container Information

Package Level 1 Units	5 piece
Package Level 1 Width	115 mm
Package Level 1 Height	64 mm
Package Level 1 Depth / Length	280 mm
Package Level 1 Gross Weight	1.795 kg
Package Level 1 EAN	4013614418068

Classifications

Object Classification Code	Q
ETIM 4	EC000066 - Magnet contactor, AC-switching
ETIM 5	EC000010 - Starter combination
ETIM 6	EC000010 - Combination of contactors
ETIM 7	EC000010 - Combination of contactors
ETIM 8	EC000010 - Combination of contactors
eClass	V11.0 : 27371009
UNSPSC	39121529

Categories

Low Voltage Products and Systems → Control Products → Contactors → Mini Contactors

