



MASTER - LED HID HPI

TForce LED HPI UN 95W E40 840 NB

Philips LED Highbay lamps give you a quick and easy payback solution to replace HID alternatives in high-bay applications. TrueForce LED solutions give you the LED benefits of energy-efficiency and a long lifetime for a low initial investment. The design of TrueForce LED enables the direct retrofit of HID lamps with TrueForce LED lamps without changing the fixtures or gear. In fact, the TrueForce LED lamp is compatible with both 250W and 400W gears to maximize the feasibility of such retrofits. Ignitor smart logic eliminates ignitor failure and continued ignition, which may generate overhear and EMI risks. Multiple beam angle options and a high color rendering index enhance the lighting distribution in medium and high-bay applications, while creating a comfortable, safe and highly-productive environment.

Warnings and Safety

- Installation should always be performed by a qualified electrician or installer. Use the installation guide for instructions.

Product data

General Information		Correlated Color Temperature (Nom)	
Cap-Base	E40 [E40]		4000 K
Nominal lifetime	50,000 hour(s)	Luminous Efficacy (rated) (Nom)	136 lm/W
Switching Cycle	50,000	Color Consistency	<6
Lighting Technology	LED	Color rendering index (CRI)	80
Flux measurement reference	Narrow Cone	LLMF At End Of Nominal Lifetime (Nom)	70 %
Light Technical		Operating and Electrical	
Color Code	840 [CCT of 4000K]	Line Frequency	50 Hz
Beam Angle (Nom)	60 degree(s)	Input Frequency	50 Hz
Luminous Flux	13,000 lumen	Power Consumption	95 W
Color Designation	Cool White (CW)	Lamp Current (Nom)	500 mA
		Wattage Equivalent	250 W

MASTER - LED HID HPI

Starting Time (Nom)	0.5 s
Warm-up time to 60% light	1 s
Power Factor (Fraction)	0.9
Voltage (Nom)	220-240 V

Temperature

Ambient temperature range	-20 °C to 45 °C
T-Case Maximum (Nom)	55 °C

Controls and Dimming

Dimmable	No
----------	----

Mechanical and Housing

Bulb Shape	Others
------------	--------

Approval and Application

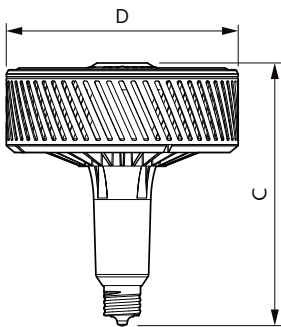
Energy Consumption kWh/1000 h	95 kWh
-------------------------------	--------

EPREL Registration Number	403,624
CE mark	Yes
EU RoHS compliant	Yes

Product Data

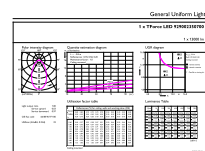
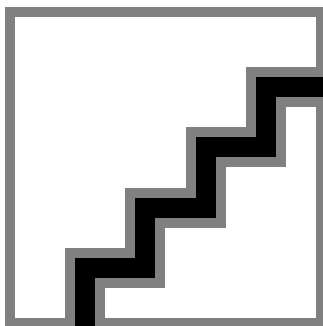
Full product code	871869975367200
Order product name	TForce LED HPI UN 95W E40 840 NB
Order code	929002350702
Numerator - Quantity Per Pack	1
Numerator - Packs per outer box	3
Material number (12NC)	929002350702
Full product name	TForce LED HPI UN 95W E40 840 NB
EAN/UPC - Case	8718699753689

Dimensional drawing



Product	D	C
TForce LED HPI UN 95W E40 840 NB	250 mm	290 mm

Photometric data

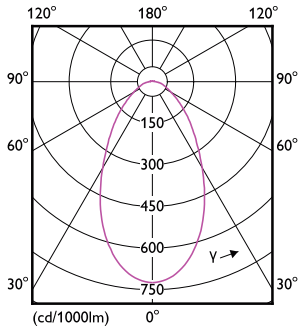


© 2023 Philips Lighting B.V. Page 11

Spectral Power Distribution Colour - TForce LED HPI UN 95W E40 840 NB

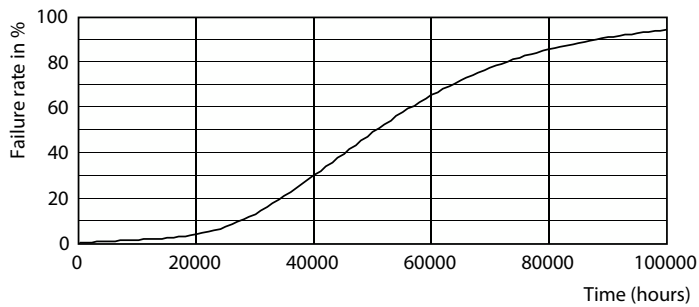
MASTER - LED HID HPI

Photometric data

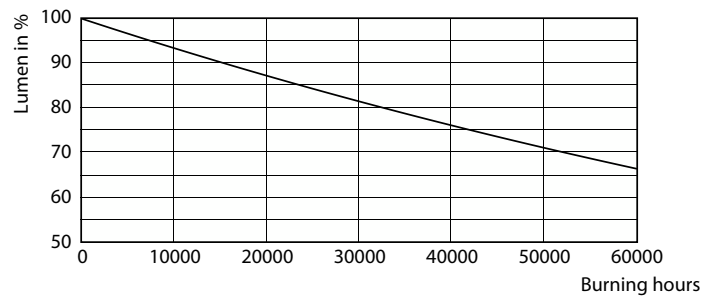


Light Distribution Diagram - TForce LED HPI UN 95W E40 840 NB

Lifetime



Life Expectancy Diagram - TForce LED HPI UN 95W E40 840 NB



Lumen Maintenance Diagram - TForce LED HPI UN 95W E40 840 NB

