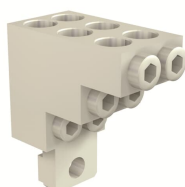


PRODUCT-DETAILS

KIT MC CuAl 6x2.5...35mm² XT4 6pcs

KIT MC CuAl 6x2.5...35mm² XT4 6pcs



General Information

Extended Product Type	KIT MC CuAl 6x2.5...35mm ² XT4 6pcs
Product ID	1SDA066935R1
EAN	8015644008390
Catalog Description	KIT MC CuAl 6x2.5...35mm ² XT4 6pcs
Long Description	FRONT TERMINALS MULTICABLE FOR CABLES IN COPPER-ALUMINIUM 6x2.5...35mm ² 6pcs XT4

Circular Value

Conflict Minerals Reporting Template (CMRT)	9AKK108467A5658
Toxic Substances Control Act - TSCA	9AKK108467A8326

Environmental

Environmental Information	9AKK108467A6707
REACH Declaration	9AKK108466A1425
RoHS Information	9AKK108466A1424
RoHS Status	Following EU Directive 2011/65/EU and Amendment 2015/863 July 22, 2019

Ordering

Order Code US and Canada	KXT4EMC-6PC
EAN	8015644008390
Minimum Order Quantity	1 piece
Customs Tariff Number	85389099

Dimensions

Product Net Weight	0.3 kg
--------------------	--------

Container Information

Package Level 1 Units	box 1 piece
Package Level 1 Width	120 mm
Package Level 1 Height	155 mm
Package Level 1 Depth / Length	190 mm
Package Level 1 Gross Weight	0.37 kg
Package Level 1 EAN	8015644008390

Additional Information

Configuration Type	Loose or configurable
Number of Poles	3
Order Multiple	1 piece
Product Main Type	Accessories for Tmax XT
Product Name	Accessory
Product Type	Accessory
Standards	IEC
Suitable For	XT4
Suitable for Product Class	SACE Tmax XT

Certificates and Declarations

Data Sheet, Technical Information	1SDC210100D0205 1SDC210099D0205
Declaration of Conformity - CE	Refer to the EU Declaration of the relative Circuit Breaker
Instructions and Manuals	1SDH000719R0808

Classifications

ETIM 7	EC002019 - Connection vane/phase spreader
ETIM 8	EC002019 - Connection vane/phase spreader
ETIM 9	EC002019 - Connection vane/phase spreader
Object Classification Code	Q
UNSPSC	39120000
WEEE Category	5. Small Equipment (No External Dimension More Than 50 cm)

Categories

Low Voltage Products and Systems → Circuit Breakers → Moulded Case Circuit Breakers → Accessories for Tmax XT

