

Reinforcement box

U 71 BWD GVD-2-60

U 71 BWD GVD-2-60

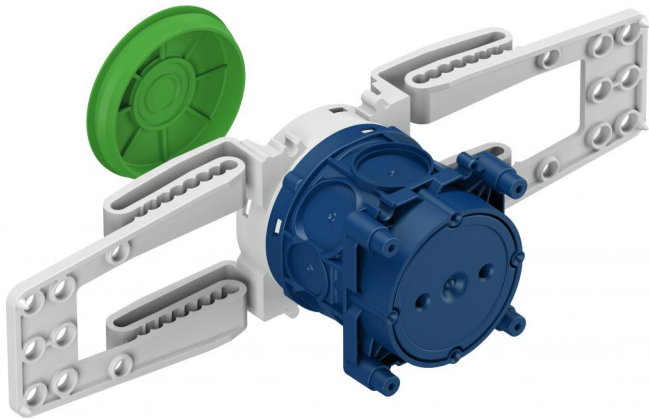
Reinforcement box

Productnumber: 97116501

Dimensions: 76 x 300 x 85 mm

Reinforcement box, green rearward base with max. 1 x 25 mm insert, combinable, suitable for opposing formwork without support, pre-installation in the reinforcement bars, for concrete installation, combinable with a standard spacing of 71 mm, with protection class IP30, Rated insulation voltage: 400V AC, certified according to VDE (DIN EN 60670-1/-22 (VDE 0606-1/-22)), Halogen free

2-part, height 85mm, 60 mm Ø discharge at the front, entries: 6 x to 25 mm Ø, 2 x to 20 mm Ø, concrete cover for the reinforcement of 20-60 mm, for connecting wall lights according to VDE certified according to DIN EN 60670 (VDE 0606), installation at reinforcement via reinforcement adapter, membrane for perforation, Sealing area M16 - M25



Technical Data

electrical characteristics

Rated insulation voltage AC:	400 V
Type of protection:	IP30
Suitable for:	Concrete construction
UL Type Rating:	not specified

Colours

Cover colour:	other
---------------	-------

Dimensions

Width:	76 mm
Length:	300 mm
Height:	85 mm

Material characteristics

Industry quality:	no
Halogen free:	yes
Flammability class according with UL94:	HB
Glow-wire flammability according to EN 60695-2-11:	650 °C

mechanical properties

Type of fastening:	installation at reinforcement via reinforcement adapter
--------------------	---

Ambient conditions

max. relative humidity 25°C:	- %
max. relative humidity 40°C:	50 %
Min. ambient temperature:	-25 °C
Max. ambient temperature:	40 °C
24h ambient temperature:	35 °C

Material

Base unit material:	Plastic
---------------------	---------

Certificates

Test mark:	VDE (DIN EN 60670-1/-22 (VDE 0606-1/-22))
------------	---

Cable gland

$6x \leq \varnothing 25 \text{ mm}$
 $2x \leq \varnothing 20 \text{ mm}$

