



# CorePro LED PLL

## CorePro LED PLL Mains 24W 830 4P

Philips CorePro LED PLL is the ideal uplamping solution for downlights & luminaires in a wide range of general lighting applications. It integrates a LED light source into a traditional fluorescent form factor to offer superb energy savings over a lifetime that's twice as long as fluorescent alternatives.

### Product data

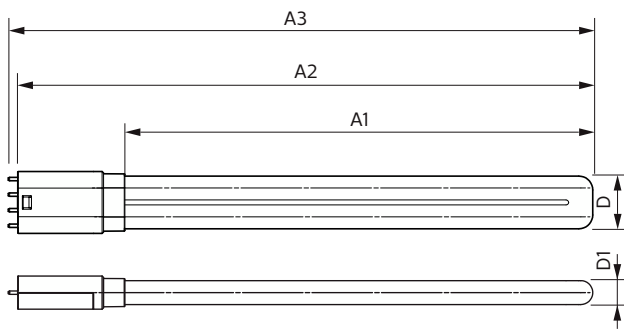
General Information		Power Consumption	
Cap-Base	2G11 [2G11]	Power Consumption	24 W
EU RoHS compliant	Yes	Lamp Current (Nom)	127 mA
Nominal lifetime	30,000 hour(s)	Starting Time (Nom)	0.5 s
Switching Cycle	200,000	Warm-up time to 60% light	0.5 s
Lighting Technology	LED	Power Factor (Fraction)	0.9
Flux measurement reference	Sphere	Voltage (Nom)	220-240 V
Brand	Philips	<b>Temperature</b>	
<b>Light Technical</b>		Ambient temperature range	-20 °C to 45 °C
Color Code	830 [CCT of 3000K]	T-Case Maximum (Nom)	75 °C
Beam Angle (Nom)	160 degree(s)	<b>Controls and Dimming</b>	
Luminous Flux	3,200 lumen	Dimmable	No
Color Designation	White (WH)	<b>Mechanical and Housing</b>	
Correlated Color Temperature (Nom)	3000 K	Bulb Finish	Frosted
Luminous Efficacy (rated) (Nom)	133 lm/W	Bulb Material	Glass
Color Consistency	<6	Product Length	500 mm
Color rendering index (CRI)	80	Bulb Shape	Tube, single-ended
LLMF At End Of Nominal Lifetime (Nom)	70 %	<b>Approval and Application</b>	
<b>Operating and Electrical</b>		Energy Saving Product	Yes
Line Frequency	50 to 60 Hz		
Input Frequency	50 to 60 Hz		

# CorePro LED PLL

Approval Marks	RoHS compliance TUV CE marking KEMA Keur certificate
Energy Consumption kWh/1000 h	24 kWh
EPREL Registration Number	1,370.829
<b>Product Data</b>	
Full product code	872016915711800
Order product name	CorePro LED PLL Mains 24W 830 4P
Order code	929003592802

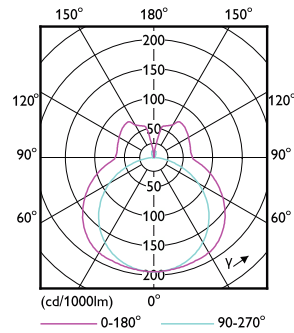
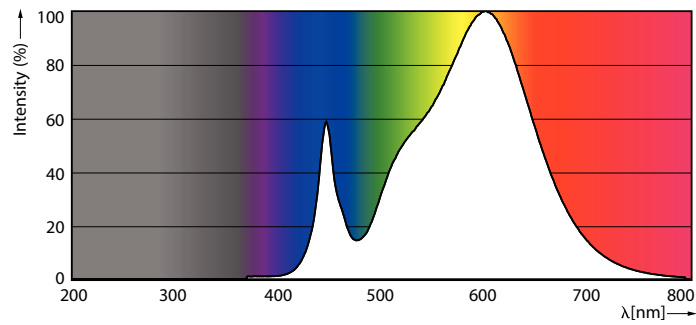
Numerator - Quantity Per Pack	1
Numerator - Packs per outer box	10
Material number (12NC)	929003592802
Net weight	0.192 kg
Full product name	CorePro LED PLL Mains 24W 830 4P
EAN/UPC - Case	8720169157125

## Dimensional drawing



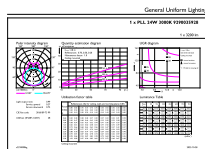
Product	D1	D2	A1	A2	A3
CorePro LED PLL Mains 24W 830 4P	17 mm		453 mm	528 mm	535 mm

## Photometric data



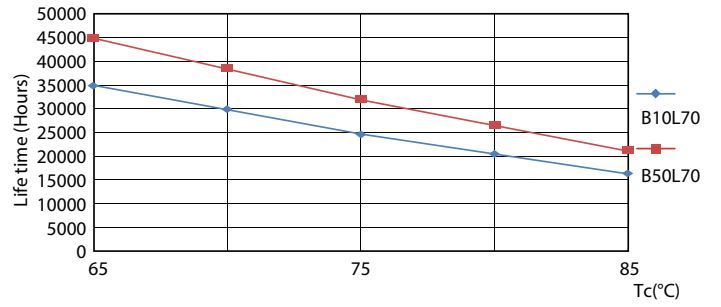
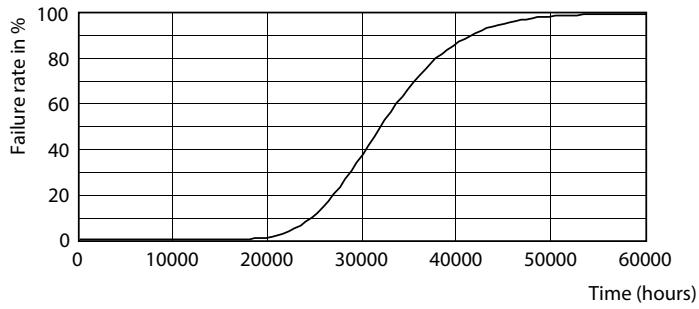
Spectral Power Distribution Colour

Light Distribution Diagram



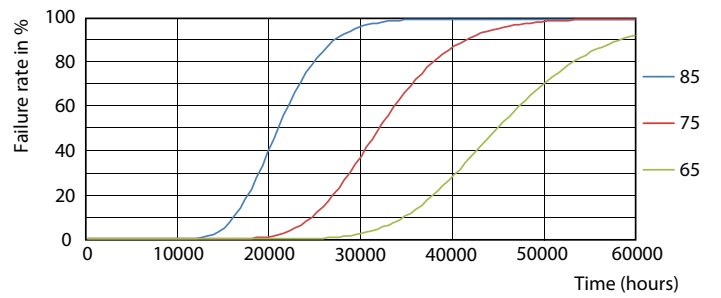
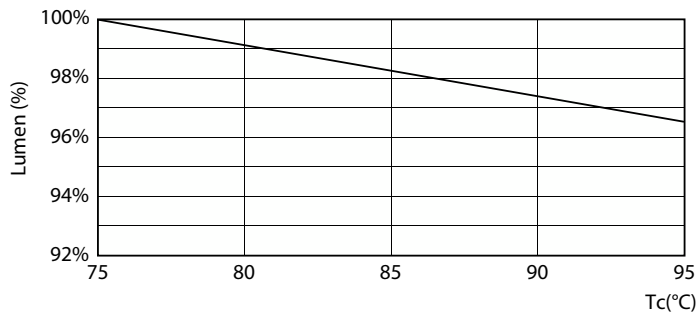
# CorePro LED PLL

## Lifetime



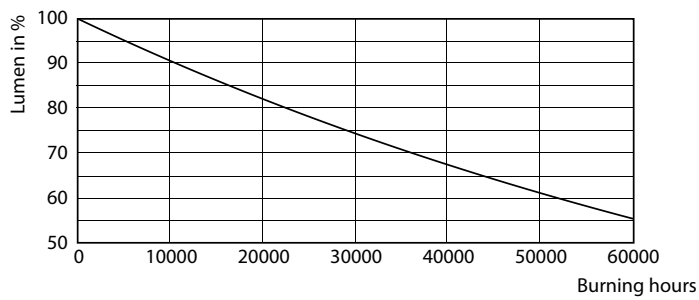
Life Expectancy Diagram - CorePro LED PLL Mains 24W 830 4P

Life Expectancy Diagram



Lumen Maintenance Diagram

Life Expectancy Diagram



Lumen Maintenance Diagram - CorePro LED PLL Mains 24W 830 4P

## CorePro LED PLL

