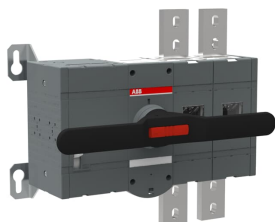


PRODUCT-DETAILS

OTM1600E3M230C

OTM1600E3M230C MOTORIZED SWITCH



Informations générales

Extension du type de produit	OTM1600E3M230C
Code de produit	1SCA115366R1001
EAN	6417019477367
Description courte	OTM1600E3M230C MOTORIZED SWITCH
Description longue	3-pole, motor operated, base mounted switch-d disconnecter with handle for manual operation, terminal bolt kit, handle and spare fuse storage clip and male connector for control circuit

Circular Value

Conflict Minerals Reporting Template (CMRT)	9AKK108467A5658
REACH Declaration	1SCC011021D0201
Informations RoHS	1SCC011020D0201

Commande

Quantité minimum	1 pièce
Code douanier	85365080
Pays d'origine	Finland (FI)

Popular Downloads

Fiche produit, informations techniques	1SCC301020C0201
Instructions et manuels	1SCC303006M0205

Dimensions

Produit Largeur Net	506.5 mm
Produit Hauteur Net	372 mm
Produit Longueur Net	153 mm
Poids net	26 kg

Technique

Rated Operational Current AC-21A (I_e)	(380 ... 415 V) 1600 A (500 V) 1600 A (690 V) 1600 A (1000 V AC) 1600 A
Rated Operational Current AC-22A (I_e)	(380 ... 415 V) 1600 A (500 V) 1600 A (690 V) 1600 A
Rated Operational Current AC-23A (I_e)	(380 ... 415 V) 1250 A (500 V) 1250 A (690 V) 1250 A
Rated Operational Power AC-23A (P_e)	(400 ... 415 V) 710 kW (500 V) 900 kW (690 V) 1200 kW
Courant thermique conventionnel à l'air libre (I_{th})	$\Theta = 40$ °C 1600 A
Conventional Thermal Current (I_{the})	Fully Enclosed 1600 A
Tension assignée de tenue aux chocs (U_{imp})	12 kV
Tension assignée d' isolement (U_i)	acc. to IEC/EN 60664-1 1000 V
Tension	Circuit principal 1000 V
Rated Short-Circuit Making Capacity (I_{cm})	(690 V) 110 kA
Courant assigné de courte durée admissible (I_{cw})	for 1 s 50 kA
Rated Conditional Short- Circuit Current (I_{nc})	(1250 A fuse, 415 V) 80 kA (1250 A fuse, 500 V) 100 kA
Motor Operational Voltage	220 ... 240 V AC
Power Loss	at Rated Operating Conditions per Pole 48 W
Degré de pollution	3
Handle Color	Black
Handle Type	Direct mounted handle
Switches Operating	Mechanism at the End of the Switch

Mechanism

Distance Between Phases	Standard
Position of Line Terminals	Top In - Bottom Out
Mode de fonctionnement	Front operated
Normes et standards	IEC 60947-3
Fonctions spéciales	No
Type de montage	Base mounting
Nombre de pôles	3
Indice de protection	Front IP00
Type de borne	Lug terminals
Couple de serrage	acc. IEC 60947-1 50 ... 75 N·m
Durabilité mécanique	6000
Lock Type	Yes

Technique UL/CSA

Couple de serrage	acc. IEC 60947-1 50 ... 75 N·m
-------------------	--------------------------------

Environnement

Statut RoHS	Following EU Directive 2011/65/EU and Amendment 2015/863 July 22, 2019
-------------	--

Certificats et Déclarations (Numéro de document)

Certificat ATEX	No certification needed
Déclaration de Conformité - CE	1SCC301213D2702
REACH Declaration	1SCC011021D0201
Certificat UL	No certification needed
VDE Certificate	No certification needed

Emballage

Emballage Niveau 1 Unités	box 1 pièce
Emballage Niveau 1 Largeur	407 mm 16.02 in
Emballage Niveau 1 Longueur	619 mm 24.37 in
Emballage Niveau 1 Hauteur	190 mm 7.48 in
Emballage Niveau 1 Poids	28 kg 13 lb
Emballage Niveau 1 EAN	6417019477367

Classifications

Code de classification d'objet	Q
ETIM 7	EC000216 - Switch disconnecter
ETIM 8	EC000216 - Switch disconnecter
ETIM 9	EC000216 - Switch disconnecter (low voltage)
eClass	V11.1 : 27371403
Catégorie DEEE	4. Large Equipment (Any External Dimension More Than 50 cm)

Catégories

Produits basse tension → Interrupteurs → Motorized Switch-Disconnectors

