

# THORGEON

ENERGY METERS



## SOCKET ENERGY METER

### 01008



## SOCKET ENERGY METER

MODEL No: 01008

### GENERAL FEATURES

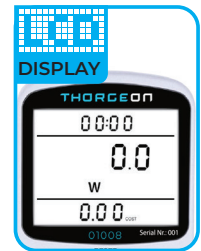
1. Display line power.
2. Display and memory accumulative total power quantity.
3. Display and memory total power charge of price.

WARNING! Do not plug two or more meters together!  
 IMPORTANT: Don't plug in an appliance where the load exceeds 10Amp.

Always ensure the plug of any appliance is fully inserted into the meter outlet.

If cleaning of the meter is required, remove from mains power and wipe meter with a dry cloth.

• KINDLY NOTE if an abnormal display appears or the buttons produce no response, the Electricity Usage Monitor must be reset. Please press the RESET button.



### TECHNICAL PARAMETERS

OPERATING VOLTAGE:	230V
FREQUENCY:	50HZ
OPERATING CURRENT:	MAX 16A
WIDE VOLTAGE RANGE:	230~250V
MAX. LOAD:	16A, 3680W
MIN. POWER DISPLAY:	0.1W
MIN. POWER QUANTITY DISPLAY:	0.01KWH
MEASURE POWER ACCURACY:	+/-2% OR +/-2W (0-100W) +/-2%(100-3250W)
POWER QUANTITY ACCURACY:	+/-2%
ACCUMULATIVE POWER QUANTITY RANGE:	0.00-9999.9KWH

WATTAGE DISPLAY (WATTS):	0~9999W
VOLTAGE DISPLAY RANGE:	0.000~9999V
CURRENT DISPLAY (AMPS):	0.000~16.000A
FREQUENCY DISPLAY:	0~9999 HZPL
PRICE RANGE:	0.00-9999
TIMING DISPLAY RANGE:	0 SEC - 9999 DAYS
PROTECTION CLASS:	IP20
TEMPERATURE RANGE:	0~40°C
ITEM DIMENSIONS:	12.6 X 6.4 X 5.1 CM; 240 GRAMS

