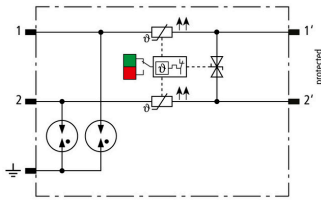


**BCO ML2 BPD 24 (927 214)**

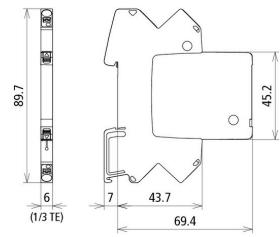
- LifeCheck arrester monitoring and integrated status indication
- For 24 V DC systems - combined with overcurrent protection
- For installation in conformity with the lightning protection zone concept at the boundaries from  $O_A - 2$  and higher



Figure without obligation



Basic circuit diagram BCO ML2 BPD 24



Dimension drawing BCO ML2 BPD 24

Space-saving, modular combined arrester with a width of 6 mm and push-in connection technology with status indication for protecting one pair in 24 V DC systems. Also suitable for use with an earthed negative pole. Integrated PTC resistors allow for secure resetting of the arrester after interference in the system circuit with short-circuit currents of up to 40 A. With signal disconnection for maintenance purposes.

Type	BCO ML2 BPD 24
Part No.	927 214
SPD class	TYPE 1 P2
Impulse category	D1, C1, C2, C3, B2
Nominal voltage ( $U_N$ )	24 V
Max. continuous operating voltage (d.c.) ( $U_C$ )	33 V
Max. continuous operating voltage (a.c.) ( $U_C$ )	23.3 V
Nominal current at 70 °C ( $I_N$ )	0.1 A
D1 Total lightning impulse current (10/350 $\mu$ s) ( $I_{imp}$ )	3 kA
D1 Lightning impulse current (10/350 $\mu$ s) per line ( $I_{imp}$ )	1.5 kA
C2 Total nominal discharge current (8/20 $\mu$ s) ( $I_n$ )	10 kA
C2 Nominal discharge current (8/20 $\mu$ s) per line ( $I_n$ )	5 kA
Voltage protection level line-line for $I_n$ C2 ( $U_p$ )	$\leq 65$ V
Voltage protection level line-PG for $I_n$ C2 ( $U_p$ )	$\leq 650$ V
Voltage protection level line-line for $I_n$ C1 ( $U_p$ )	$\leq 65$ V
Voltage protection level line-PG for $I_n$ C1 ( $U_p$ )	$\leq 650$ V
Voltage protection level line-line at 1 kV/ $\mu$ s C3 ( $U_p$ )	$\leq 44$ V
Voltage protection level line-PG at 1 kV/ $\mu$ s C3 ( $U_p$ )	$\leq 600$ V
Series resistance per line	10 ohm(s)
Cut-off frequency line-line ( $f_c$ )	4.5 MHz
Capacitance line-line (C)	$\leq 1$ nF pF
Capacitance line-PG (C)	$\leq 15$ pF pF
Operating temperature range ( $T_U$ )	-40°C to +70°C
Operating state / fault indication	green / red
Degree of protection	IP 20
Connection (input / output)	push-in / push-in
Cross-sectional area (solid)	0.2-2.5 mm <sup>2</sup>
Cross-sectional area (flexible)	0.2-2.5 mm <sup>2</sup>
Earthing via	35 mm DIN rails acc. to EN 60715
Enclosure material	polyamide PA 6.6
Colour	yellow
Test standards	IEC 61643-21 / EN 61643-21
Approvals	UL
Extended technical data:	-----
- Max. discharge current (8/20 $\mu$ s) [1/2 - PG], [1+2 - PG] ( $I_{max}$ )	20 kA
- Discharge current (8/20 $\mu$ s) [1/2 - PG], [1+2 - PG]	10 kA (10x)
- Voltage protection level line-PG at 1 kV/ $\mu$ s C3 after being subjected to $I_{max}$ ( $U_p$ )	$\leq 600$ V
Weight	33 g
Customs tariff number	85363010
GTIN	4013364473003
PU	1 Stk

We reserve the right to introduce changes in performance, configuration and technology, dimensions, weights and materials in the course of technical progress. The figures are shown without obligation.