



MASTER LEDtube Mains T5



MAS LEDtube 900mm HO 18.5W 840 T5

The new Philips Master LEDtube Mains T5 brings simplicity to your lighting project. You don't need to pay attention to the driver technology anymore. Thanks to a unique design, Philips MASTER LEDtube Mains T5 installs in luminaires operating on mains power connection. So simple to operate! . Perfectly safe, reliable & easy to install Philips MASTER LEDtube Mains T5 is the ideal alternative to standard fluorescent tubes to maximize value over lifetime with high energy saving and lower maintenance costs.

Product data

| General Information | | Photobiological safety according to EN 62471 | |
|---------------------------------------|--------------------|--|-------------|
| Cap-Base | G5 | | RG0 |
| Nominal lifetime | 50,000 hour(s) | Operating and Electrical | |
| Switching Cycle | 200,000 | Input Frequency | 50 to 60 Hz |
| Lighting Technology | LED | Power Consumption | 18.5 W |
| Flux measurement reference | Sphere | Lamp Current (Max) | 93 mA |
| Light Technical | | Lamp Current (Min) | 93 mA |
| Color Code | 840 [CCT of 4000K] | Lamp Current (Nom) | 93 mA |
| Beam Angle (Nom) | 200 degree(s) | Starting Time (Nom) | 0.5 s |
| Luminous Flux | 2,800 lm | Warm-up time to 60% light | 0.5 s |
| Color Designation | Cool White (CW) | Power Factor (Fraction) | 0.92 |
| Correlated Color Temperature (Nom) | 4000 K | Voltage (Nom) | 220-240 V |
| Luminous Efficacy (rated) (Nom) | 151 lm/W | Ballast Compatibility | Mains |
| Color Consistency | <6 | LED alternative to fluorescent lamp power | 39 W |
| Color rendering index (CRI) | 80 | Inrush current at mains | 17 |
| LLMF At End Of Nominal Lifetime (Nom) | 70 % | Max. lamp no. on MCB B type 10A - Mains | 41 |
| | | Max. lamp no. on MCB B type 10A – EM ballast without Compensation Capacitor. | - |

MASTER LEDtube Mains T5

| | |
|--|----|
| Max. lamp no. on MCB B type 10A – EM ballast with Compensation Capacitor. | - |
| Max. lamp no. on MCB B type 16A – Mains | 66 |
| Max. lamp no. on MCB B type 16A – EM ballast without Compensation Capacitor. | - |
| Max. lamp no. on MCB B type 16A – EM ballast with Compensation Capacitor. | - |

Temperature

| | |
|----------------------|-------|
| T-Case Maximum (Nom) | 60 °C |
|----------------------|-------|

Controls and Dimming

| | |
|----------|----|
| Dimmable | No |
|----------|----|

Mechanical and Housing

| | |
|--------------------|----------|
| Bulb Finish | Frosted |
| Bulb Material | Glass |
| Product Length | 900 mm |
| Bulb Shape | T5 |
| Net Weight (Piece) | 0.125 kg |

Approval and Application

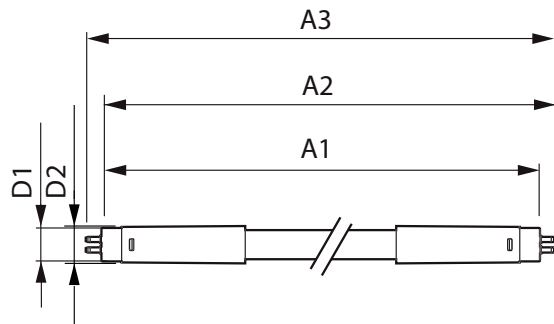
| | |
|-------------------------|-----|
| Energy Efficiency Class | D |
| Energy Saving Product | Yes |

| | |
|---|-----------------|
| Approval Marks | RoHS compliance |
| Energy Consumption kWh/1000 h | 19 kWh |
| EPREL Registration Number | 1590869 |
| CE mark | Yes |
| EU RoHS compliant | Yes |
| Flickering value (PstLM) – Flickering value as per EN 61000-3-3 | 1 |
| Stroboscopic effect visibility measure (SVM) | 0.4 |
| Ambient temperature range | -20 to +45 °C |

Product Data

| | |
|---------------------------------|-----------------------------------|
| Order product name | MAS LEDtube 900mm HO 18.5W 840 T5 |
| Full product name | MAS LEDtube 900mm HO 18.5W 840 T5 |
| Full product code | 872016927527000 |
| Order code | 929003734702 |
| Material Nr. (12NC) | 929003734702 |
| Numerator - Quantity Per Pack | 1 |
| EAN/UPC - Product/Case | 8720169275287 |
| Numerator - Packs per outer box | 10 |
| EAN/UPC - Case | 8720169275287 |

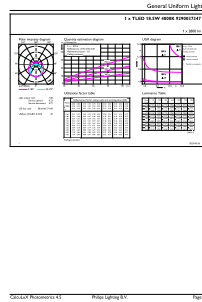
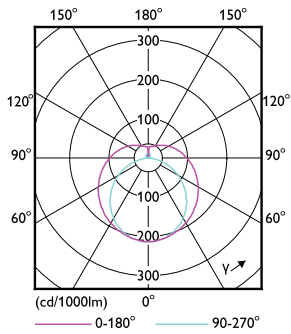
Dimensional drawing



| Product | D1 | D2 | A1 | A2 | A3 |
|-----------------------------------|-------|--------|----------|----------|----|
| MAS LEDtube 900mm HO 18.5W 840 T5 | 19 mm | 849 mm | 856.1 mm | 863.2 mm | |

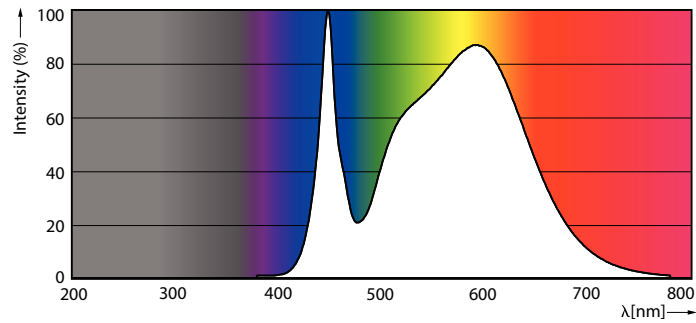
MASTER LEDtube Mains T5

Photometric data



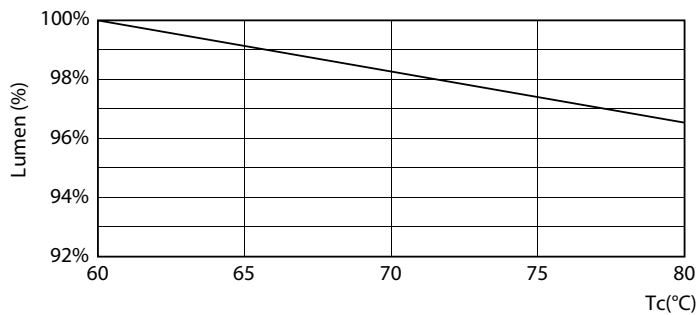
Light Distribution Diagram - MAS LEDtube 900mm HO 18.5W 840 T5

General uniform lighting - MAS LEDtube 900mm HO 18.5W 840 T5

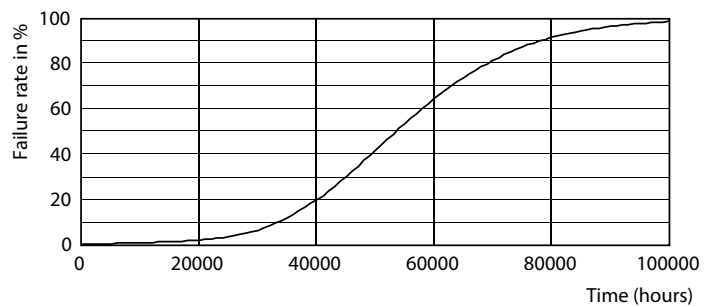


Spectral Power Distribution Colour - MAS LEDtube 900mm HO 18.5W 840 T5

Lifetime



Lumen Maintenance Diagram - MAS LEDtube 900mm HO 18.5W 840 T5



Life Expectancy Diagram

MASTER LEDtube Mains T5

Lifetime



LifetimeVsTc

FailureRate



Lumen Maintenance Diagram - MAS LEDtube 900mm HO 18.5W 840 T5

