



# MASTER LEDtube InstantFit HF T8

## MAS LEDtube HF 1500mm UO 24W865 T8

Philips MASTER LEDtube InstantFit T8 integrates a LED light source into a traditional fluorescent form factor. Its unique design creates a perfectly uniform visual appearance which cannot be distinguished from traditional fluorescent. Philips MASTER LEDtube InstantFit T8 is the ideal solution for customers who have higher light requirements and want to maximize value over lifetime. Full energy savings & longer lifetime result in attractive payback times and TCO benefits.

### Warnings and Safety

- NOTES: The overall energy efficiency and light distribution of any installation that uses these lamps are determined by the design of the installation.

### Product data

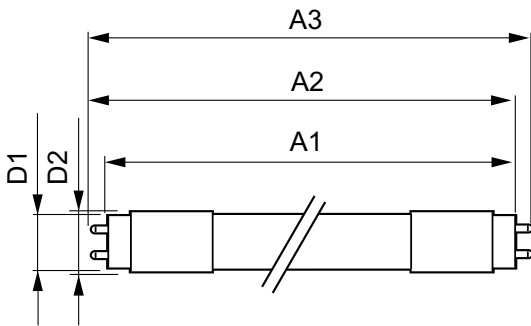
General Information		Color Consistency	
Cap-Base	G13 ROT (Rotating) [Medium Bi-Pin Fluorescent]	Color Consistency	<6
Nominal lifetime	75,000 hour(s)	Color rendering index (CRI)	80
Switching Cycle	50,000	LLMF At End Of Nominal Lifetime (Nom)	70 %
Lighting Technology	LED	Operating and Electrical	
Flux measurement reference	Sphere	Line Frequency	20000-75000 Hz
Color Code	865 [CCT of 6500K]	Input Frequency	20000-75000 Hz
Beam Angle (Nom)	160 degree(s)	Power Consumption	24 W
Luminous Flux	3,700 lumen	Starting Time (Nom)	0.5 s
Color Designation	Cool Daylight	Warm-up time to 60% light	0.5 s
Correlated Color Temperature (Nom)	6500 K	Power Factor (Fraction)	0.9
Luminous Efficacy (rated) (Nom)	154 lm/W	Voltage (Nom)	30-80 V
		Temperature	
		Ambient temperature range	-20 °C to 45 °C

# MASTER LEDtube InstantFit HF T8

T-Case Maximum (Nom)	55 °C
<b>Controls and Dimming</b>	
Dimmable	Yes - Check ballast compatibility
<b>Mechanical and Housing</b>	
Bulb Finish	Frosted
Bulb Material	Plastic
Product Length	1,500 mm
Bulb Shape	Tube, double-ended
<b>Approval and Application</b>	
Energy Saving Product	Yes
Approval Marks	RoHS compliance TUV CE marking KEMA Keur certificate
Energy Consumption kWh/1000 h	24 kWh

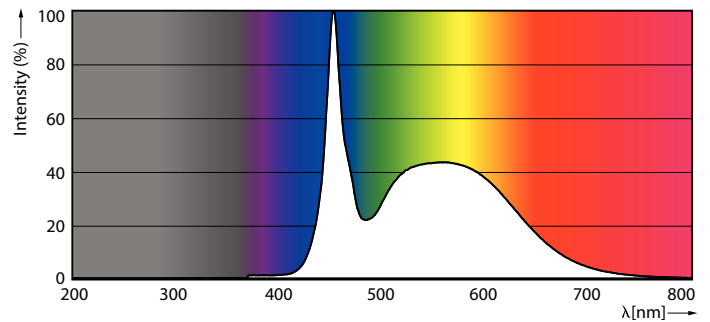
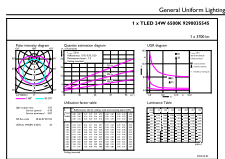
EPREL Registration Number	1,165,516
CE mark	Yes
EU RoHS compliant	Yes
<b>Product Data</b>	
Full product code	871951446704000
Order product name	MAS LEDtube HF 1500mm UO 24W865 T8
Order code	929003554502
Numerator - Quantity Per Pack	1
Numerator - Packs per outer box	20
Material number (12NC)	929003554502
Net weight	0.280 kg
Full product name	MAS LEDtube HF 1500mm UO 24W865 T8
EAN/UPC - Case	8719514467057

## Dimensional drawing



Product	D1	D2	A1	A2	A3
MAS LEDtube HF 1500mm UO 24W865 T8	25.8 mm	28 mm	1,498.8 mm	1,505.9 mm	1,513 mm

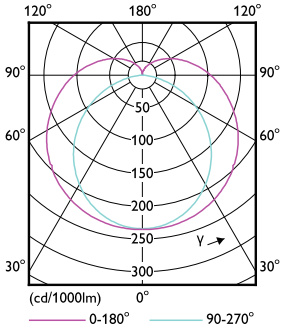
## Photometric data



Spectral Power Distribution Colour - MAS LEDtube HF 1500mm UO 24W865 T8

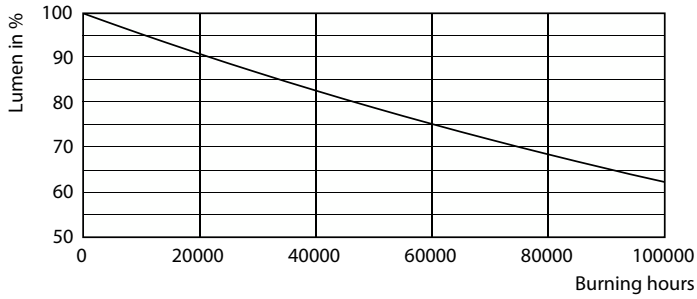
# MASTER LEDtube InstantFit HF T8

## Photometric data

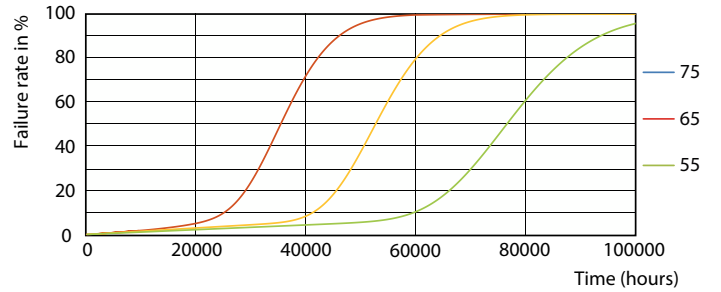


Light Distribution Diagram - MAS LEDtube HF 1500mm UO 24W865 T8

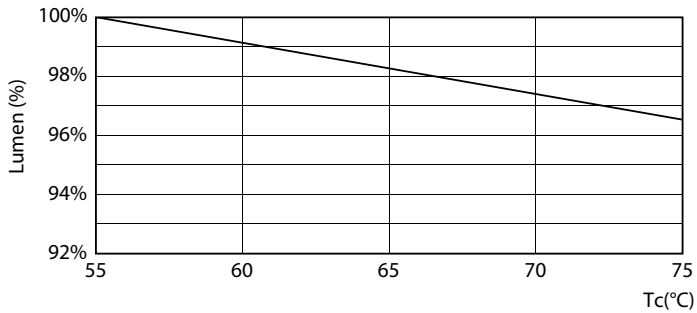
## Lifetime



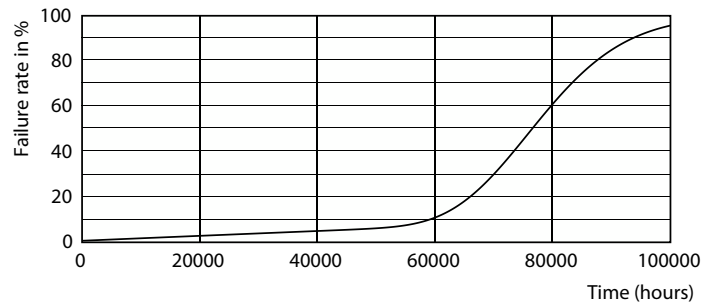
Lumen Maintenance Diagram - MAS LEDtube HF 1500mm UO 24W865 T8



Life Expectancy Diagram - MAS LEDtube HF 1500mm UO 24W865 T8



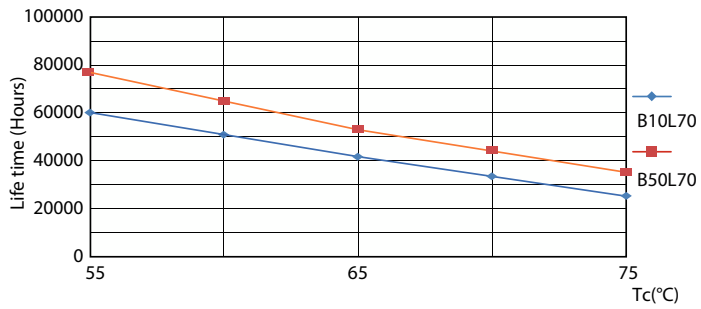
Lumen Maintenance Diagram - MAS LEDtube HF 1500mm UO 24W865 T8



Life Expectancy Diagram - MAS LEDtube HF 1500mm UO 24W865 T8

# MASTER LEDtube InstantFit HF T8

## Lifetime



Life Expectancy Diagram - MAS LEDtube HF 1500mm UO 24W865 T8

