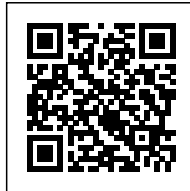
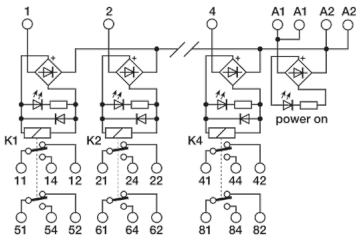


4 electromechanical relay  
24Vac/dc DPDT 10A, screw, pluggable

<b>Series</b>	
<b>Code</b>	XR042EAD
<b>Type</b>	R42EAD
<b>HS code</b>	85364190
<b>INPUT TECHNICAL DATA</b>	
<b>Input rated voltage</b>	24 Vac/dc $\pm 10\%$
<b>Pull in / drop out voltage type</b>	16.8 V / 2.4 V
<b>Current consumption</b>	22 mA $\pm 10\%$
<b>Turn ON / OFF time</b>	10 ms / 5 ms
<b>Protection circuit</b>	Free-wheel diode, Reverse polarity
<b>Connection terminal</b>	2.5 mm <sup>2</sup> screw
<b>Input channels</b>	4 pluggable
<b>OUTPUT TECHNICAL DATA</b>	
<b>Contact type</b>	DPDT, 2 form C, AgSnO <sub>2</sub>
<b>Nominal current</b>	10 A (250 Vac)
<b>Continuous current</b>	10 A
<b>Connection type</b>	
<b>GENERAL TECHNICAL DATA</b>	
<b>Operating temperature range</b>	-20...+70°C
<b>Input / output isolation</b>	2.5 kVac / 60 s
<b>Protection degree</b>	IP 00
<b>Overvoltage category / pollution degree</b>	II / 2
<b>Status indication</b>	LED "DC OK" / LED "Relay"
<b>Housing material</b>	UL94V-0 plastic material
<b>Dimensions (LxHxD)</b>	70x93x75 mm
<b>Approximate weight</b>	227 g
<b>Mounting information</b>	on a rail, side by side
<b>ACCESSORIES</b>	
<b>Mounting rail (IEC60715/TH35-7.5)</b>	PR/3/AC, PR/3/AC/ZB, PR/3/AS, PR/3/AS/ZB
<b>Mounting rail (IEC60715/TH35-15)</b>	PR/3/PP, PR/3/PP/ZB, PR/3/PA, PR/3/PA/ZB
<b>Spare part relay</b>	8904074
<b>APPROVALS AND MARKINGS</b>	CE



\* Pluggable relay\* AC/DC input voltage\* DPDT contact\* Allow PNP and NPN command  
1 Manufacturer and model of the relay is not binding, technical data are to be considered typical

## DESCRIZIONE DEL PRODOTTO

R42EAD  
4 electromechanical relay 24Vac/dc DPDT 10A, screw, pluggable