

Product Data Sheet

DX15040X

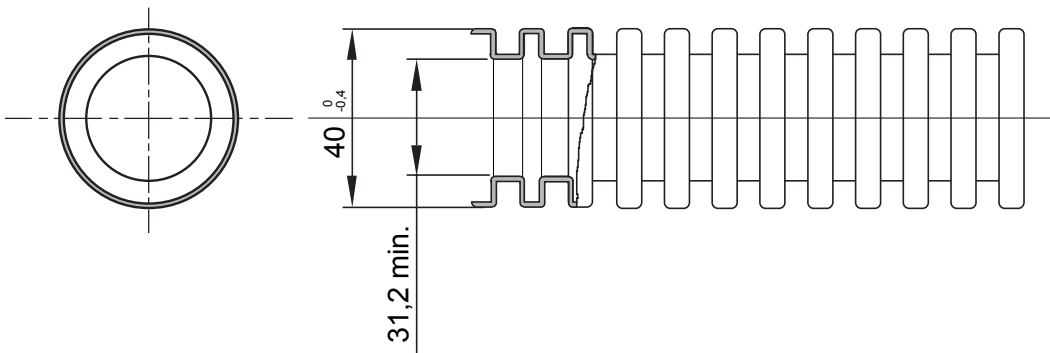
FK Range



FK-Xtreme is a series of folding tubes available in 4 diameters (from 20 mm to 40 mm) and 6 colours, to identify the different lines of the electrical system. FK-Xtreme tubes are made via a co-extrusion process, which prevents the infiltration of liquid cement used for the creation of self-levelling substrates and allows the mechanical properties of the tubes to remain intact, even in extreme conditions. The range is designed to facilitate optimal setting and wiring operations.

| | | | |
|---|---|--|--|
| Colour | Black | Material | Coextruded PVC |
| Type | without cable puller | Conduits Ø (mm) | 40 |
| Glow Wire Test | 960 °C | Electrocod | 2112 |
| Resistance to compression | 3 (Medium \geq 750 N) | Resistance to impact | 3 (Medium \geq 2 J) |
| Resistance to bending | 2 (Pliable) | Electrical characteristics | 2 (With electrical insulating characteristics) |
| Protection against ingress of solid objects without accessories | 0 | Protection against ingress of water | 0 |
| Resistance against corrosion | Not applicable to plastic conduit systems | Fire resistance | 1 (Non-flame propagating) |
| Insulation resistance | 100 M Ω a 500V for 1 minute | Protection against ingress of solid objects with GF coupling | - |
| Dielectric rigidity | 2000 V a 50 Hz for 15 minutes | Standard | EN 61386-1 EN 61386-22 |
| Classification | 3341 | | |

DIMENSIONAL



TECHNICAL SYMBOLOGY

GWT

960 °C

STANDARDS/APPROVALS



GEWISS S.p.A. Via A. Volta, 1
24069 Cenate Sotto - Bergamo - Italy
tel. +39 035 94 61 11 fax +39 035 94 69 09

www.gewiss.com
sat@gewiss.com
Last update 20/04/2023

Data, measures, designs and pictures are shown only as informative purposes, and could be changed without previous notice