

# THORGEON

POWER STATION

## PORTABLE POWER STATION

### 17003



Manufactured in PRC



-  Li-ion 32000mAh
-  W<sup>max</sup> 1000
-  W<sup>LED max</sup> 5
-  LUMENS 500
-  Hz 50
-  230V
-  DISPLAY
-  TYPE C
-  QC 3.0



# THORGEON



[www.thorgeon.com](http://www.thorgeon.com)  
SIA "ATTA-1", Daugavgrivas street 77,  
Riga, Latvia, LV-1007



4751029899040  
Developed in Latvia

- This product is a portable energy storage power supply, not a toy, please do not have children play with it.
- Please read the product manual carefully before use. If it needs to be stored for a long time (more than one month), please charge the product to about 70% of the power.
- It is recommended to empty the product first and re-charge it full before use again.
- Do not charge, use or place the product near a fire or overheating.
- Products and accessories are subject to adjustment without notice.

## **Cautions & Warnings**

Please read the precautions carefully, which are classified into "Danger", "Warning" and "Attention" grades

"Danger" level has the possibility of causing personal injury or death

"Warning" level has the possibility of causing dangerous situations to happen.

"CAUTION" could cause the result of product damage or shortened life cycle.

### **Danger**

The product contains output high-voltage alternating current, please do not insert your hands or metal conductors into the AC socket

Non-professionals should not disassemble the product without permission to avoid dangerous things such as electric shock and short circuit.

### **Warning**

Please read the specific battery charger manual before use.

It is strictly forbidden to disassemble the product.

It is strictly forbidden to use products with obvious damage.

Please use the original adapter to charge or an adapter that meets the electrical parameters specified by the manufacturer.

Please select the solar panel according to the electrical parameters specified by the manufacturer.

It is forbidden to charge with solar panels higher than 25V.

Please charge the battery within the temperature range of 0 to 45°C. Charging at too low temperature will shorten the cycle life of the battery. In the case of long-term storage (more than 3 months), it should be stored in a semi-electric state in an environment with low humidity and no corrosive gas. The storage temperature should be -10~35°C.

If the product emits peculiar smell, heat and other abnormal conditions during charging or storage, please stop charging immediately, and place it in an open place for long-distance observation. After confirming safety, contact the manufacturer or dealer

### **CAUTION**

This product is a power supply, please select the corresponding model according to the electrical equipment, prohibit the use of this product with excessive power and load; do not short-circuit the output of the product.

This product is pre-factored according to the voltage standards of different countries.

Before purchasing and using, please consult the dealer or use it according to the product instruction manual.

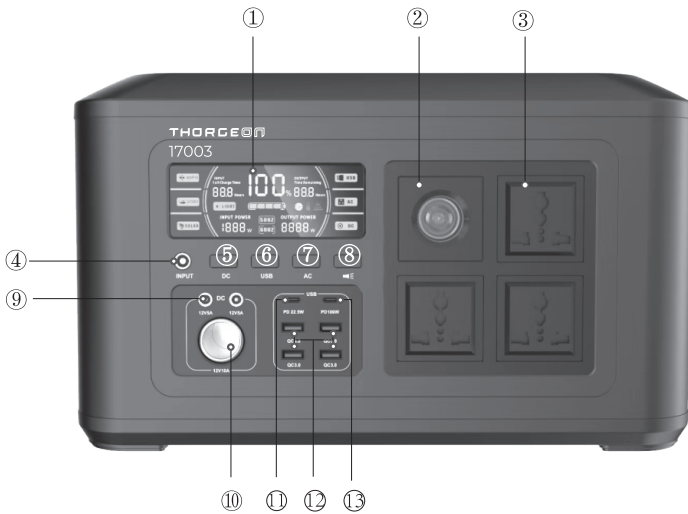
When the power of the product is exhausted, please charge it in time.

Product parts are environmentally recyclable, please recycle according to local regulations.

In order to save the power of the product, please turn off the product in time after using it, and turn it on again the next time you use it.

If it is stored for more than 6 months, in order to prolong the service life of the battery, please discharge the product first, and then use it with a full charge.

## Discharging Temperature



1. Screen Display
2. LED Lighting
3. AC Output port, Customize accordingly
4. DC unidirectional input port
5. DC On/Off Switch
6. USB On/Off Switch
7. AC On/Off Switch
8. LED On/Off Switch
9. DC output 12V5A
10. Cigarette lighter output 12V10A
11. TYPE-C-22,5W Interface (TYPE-C<sup>1</sup>)
12. USB Output Port QC3.0
13. TYPE-C-100W Interface (TYPE-C<sup>2</sup>)

## Parameters

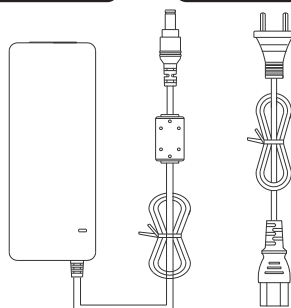
<b>Model</b>	17003	
<b>Dimension</b>	375*223*235mm	
<b>Weight</b>	13kg	
<b>Battery</b>	LiFePO4 1000Wh	
<b>Capacity</b>	320000mAh	
<b>Life Cycle</b>	5000 times, 70% DOD	
<b>AC Output</b>	100-240V (Factory setting accordingly),50-60Hz (manual switch) , pure sine wave	
<b>DC Output</b>	DC5.5Port: DC12V5A	
	Cigarette Lighter Port: DC12V10A	
<b>USB Output</b>	USB <sup>1</sup> : 5V3A/9V2A/12V1.5A	Type-C <sup>1</sup> :5V4.5A 9V2.5A 12V1.8A,MAX22.5W
	USB <sup>2</sup> : 5V3A/9V2A/12V1.5A	Type-C <sup>2</sup> :PD 100W(5~20V)
<b>Input</b>	DC <sup>1</sup> : 12-24V/8A-10A(200W Max)	
<b>Charging time</b>	About 5.5Hours (Adaptor)	
<b>Working temperature</b>	Charging Temperature: 0°C~45°C (32~113°F)	
	Discharging Temperature: -10°C~50°C (-4~122°F)	

## Accessories

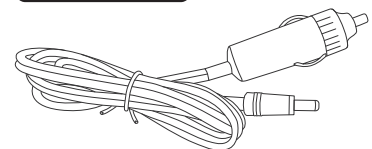
**Battery X 1**



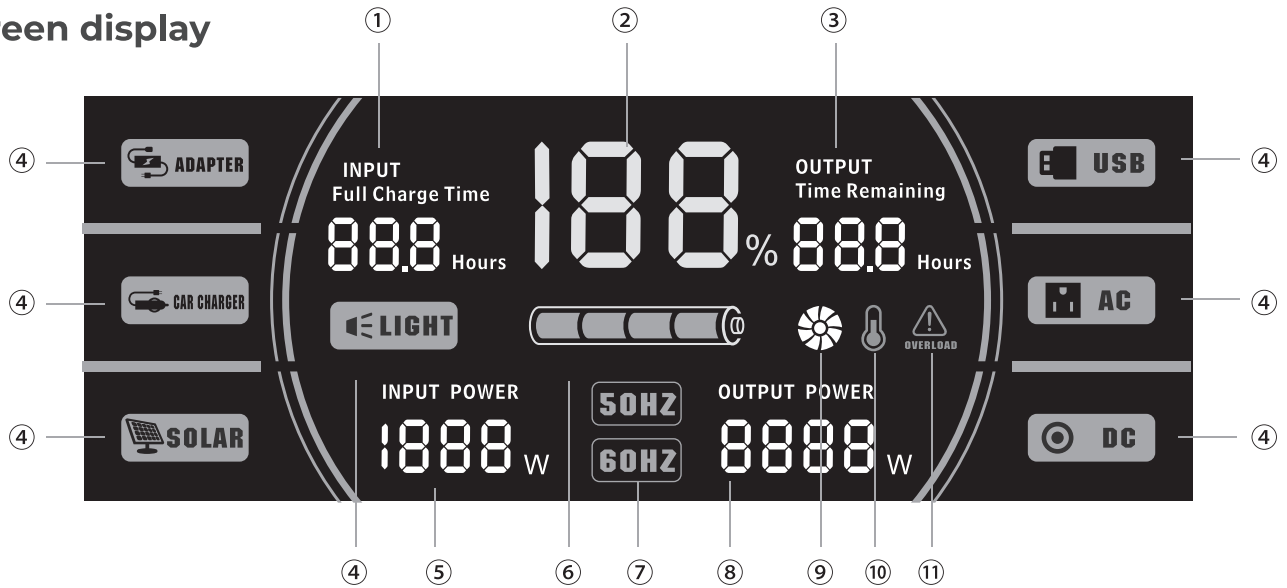
**Daptor Charger X 1 Power Cable X 1**



**Car Charging Cable X 1**



## Screen display



No.1	Item	Function
1	Time required for charging	888 display power number
2	Real-time SOC %	Display battery remaining power in percentage, 0%-100%
3	Output time remaining	Display input power when charging, or display remaining time when discharging.
4	Interface Status Icon	DC, USB, AC, LED, solar panel input, Cigarette lighter input, Adapter input
5	Real-time input Power Wattage	1888 display power number
6	Real-time SOC Icon	Displays the battery remaining power level in 4 bars and flashes when charging.
7	Frequency	Displays "50Hz" or "60Hz", indicating the corresponding frequency of the output AC. Press the AC switch 3 times in a row to switch the frequency.
8	Real-time output Power Wattage	1888 display power number
9	Fan Icon	Fan start display
10	Temperature Protection Icon	High temperature charging and discharging have an impact on battery life. When the battery temperature is too high, it will stop charging and discharging and display a temperature warning icon.
11	Overload protection	Overload short circuit reminder



## How to Charge

The product has smart charging protection function, please use it according to the charging operation. After the product is fully charged, it will automatically stop charging. In order to avoid other accidents, it is recommended to disconnect the input connection in time after the product shows that it is fully charged. The product is designed with multiple charging methods and multiple charging interfaces, compatible with 12V cars, solar panels, and commercial power. After any charging method is activated, the SOC Icon will flash.

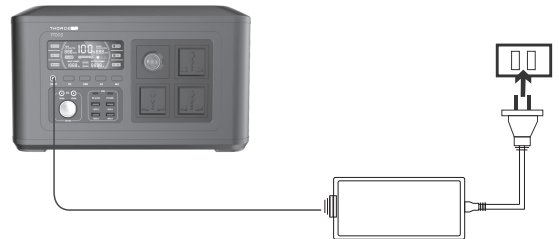
## Solar Charging

Insert the solar panel plug into the "Input" DC<sup>1</sup> Interface on the left (built-in MPPT charging management system, the maximum input power of the interface is 200W), the battery icon on the screen will scroll, and start display the remaining time of full charge. The power of the solar panel will be affected by the sun light, and the power generation will change from time to time, this will result in to charge remaining time change, which is a normal situation.



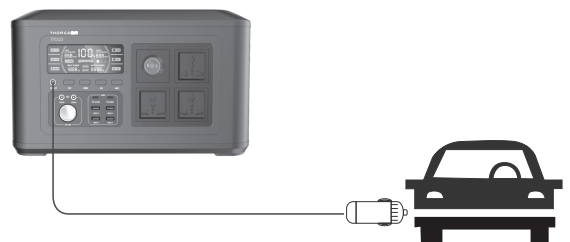
## Adapter charging

Insert the adapter output terminal into the "input" DC<sup>1</sup> interface on the left (built-in charging power management system, the maximum input power of the interface is 200W), and the battery icon will scroll.



## Car charging

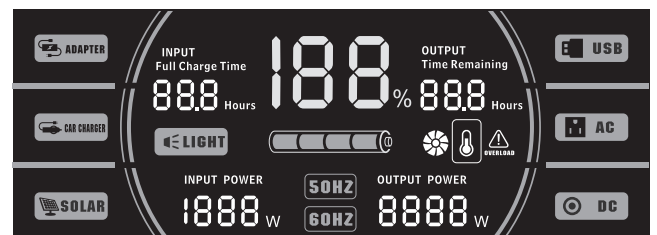
Start the car, insert one end of the car charging cable into the car cigarette lighter interface, and the other end into the DC<sup>1</sup> interface, and display the remaining time to full charged.

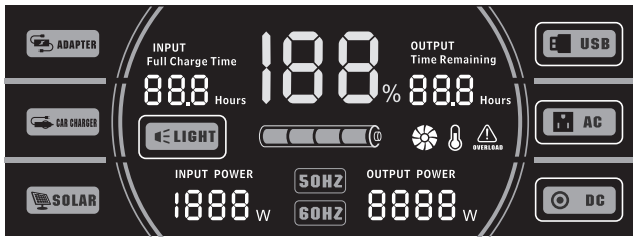


Recammended 18VDC solar panel

## Charging Pause state

The product charging has strict and precise protection. In the in the waiting stage before charging, if the discharge or charging temperature is not within the safe temperature range (0~45°C), the screen will display the following "temperature alarm icon" and not, until the internal temperature adjusted within the safe range, charging will start automatically.



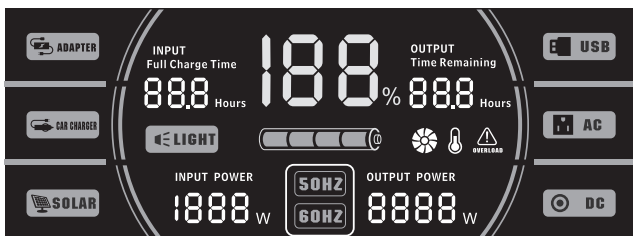


## product output (power consumption)

The product has high and low voltage, high and low temperature, multiple overcurrent, shortcircuit and other protection circuits. If the output is suddenly interrupted, first check whether the peripheral electrical appliances exceed the power or whether there is a short circuit, and then restart to check whether there is electricity. After the power is used up, in order to save the power, please turn off the power manually in time after use.

If there is any abnormal situation, please contact the manufacturer or dealer.

This product is designed with 4 switches, DC, USB, AC, LED. Press and hold the switch button of the corresponding area for about 1 second to turn on all the interfaces in the corresponding area, and the discharge icon of the interface on the display will display the AC (DC\USB\LED) icon. Press and hold the button again for about 1 second to turn off all the interfaces in the corresponding area. During the shutdown process, if you press and hold the button for more than 3S, it will trigger the entire system to shut down and sleep



## AC output frequency switching

After the AC output function is turned on, press the AC switch 3 times in a row, the screen will display the corresponding frequency, and switch to the power display interface after 2 seconds, "50Hz," 60Hz, please select according to the local power grid or electrical needs, the last frequency will be automatically memorized after shutdown.

## After-sales service

### Warranty Guidelines:

If the product fails, please operate it according to the instructions. If the failure cannot be eliminated, please contact the after-sales service personnel of our company. Contact after-sales service

Please provide the following information when contacting the service personnel: product model, date of purchase, contact number, detailed address, product failure description. Please cooperate with and answer the detailed inquiries of our company's after-sales service engineers, including on-site conditions, fault performance status, frequent/occasional accidents, and whether there are errors in operating procedures, etc., so that our company's after-sales engineers can find the reasons and then reply (or guide) users How to troubleshoot product failures. If you still cannot solve the problem, please contact your dealer.

The warranty period is 12 months from the date of sale;

During the warranty period, the company will provide free maintenance and replacement parts for defects in material and workmanship of the product and damage caused by non-human reasons, and the parts belong to our company;

During the warranty period, the following situations could be not cover by warranty:

Open the product without permission;

Damage to the surface coating and appearance is not covered by the warranty;

The user does not use it according to the instructions;

Failure or damage caused by accident, man-made, environmental and other factors (operation error, collision, unreasonable voltage, damp, etc.);

Product packaging and product accessories are not covered by the warranty