



CorePro LED tube Universal T8



CorePro LEDtube UN 1200mm HO 18W840 T8

The new Philips CorePro LEDtube Universal T8 brings simplicity to your lighting project. You don't need to pay attention to the driver technology anymore. Thanks to a unique design, Philips CorePro LEDtube Universal T8 directly fits in luminaires operating either on Electro Magnetic ballasts or HF Electronic ballasts or mains power connection. So simple to operate and no need to carry double stock of products! Perfectly safe, reliable & easy to install Philips CorePro LEDtube Universal T8 is the ideal alternative to standard fluorescent tubes to save energy and lower investment.

Product data

| General Information | |
|---------------------------------------|--------------------|
| Cap-Base | G13 |
| Nominal lifetime | 50,000 hour(s) |
| Switching Cycle | 50,000 |
| Lighting Technology | LED |
| Flux measurement reference | Sphere |
| Light Technical | |
| Color Code | 840 [CCT of 4000K] |
| Beam Angle (Nom) | 240 degree(s) |
| Luminous Flux | 2,000 lm |
| Color Designation | Cool White (CW) |
| Correlated Color Temperature (Nom) | 4000 K |
| Luminous Efficacy (rated) (Nom) | 111 lm/W |
| Color Consistency | <6 |
| Color rendering index (CRI) | 80 |
| LLMF At End Of Nominal Lifetime (Nom) | 70 % |

| Photobiological safety according to EN 62471 | RGO |
|--|-------------|
| Operating and Electrical | |
| Line Frequency | 50 to 60 Hz |
| Input Frequency | 50 to 60 Hz |
| Power Consumption | 18 W |
| Lamp Current (Nom) | 100 mA |
| Starting Time (Nom) | 0.5 s |
| Warm-up time to 60% light | 0.5 s |
| Power Factor (Fraction) | 0.9 |
| Voltage (Nom) | 220-240 V |
| Ballast Compatibility | Universal |
| LED alternative to fluorescent lamp power | 36 W |
| Inrush current at mains | 9.4 |
| Max. lamp no. on MCB B type 10A - Mains | 82 |
| Max. lamp no. on MCB B type 10A – EM ballast without Compensation Capacitor. | 104 |

CorePro LED tube Universal T8

| | |
|--|-----|
| Max. lamp no. on MCB B type 10A – EM ballast with Compensation Capacitor. | 19 |
| Max. lamp no. on MCB B type 16A – Mains | 131 |
| Max. lamp no. on MCB B type 16A – EM ballast without Compensation Capacitor. | 166 |
| Max. lamp no. on MCB B type 16A – EM ballast with Compensation Capacitor. | 30 |

Temperature

| | |
|----------------------|-------|
| T-Case Maximum (Nom) | 55 °C |
|----------------------|-------|

Controls and Dimming

| | |
|----------|----|
| Dimmable | No |
|----------|----|

Mechanical and Housing

| | |
|--------------------|----------|
| Bulb Finish | Frosted |
| Bulb Material | Glass |
| Product Length | 1,200 mm |
| Bulb Shape | T8 |
| Net Weight (Piece) | 0.215 kg |

Approval and Application

| | |
|-------------------------|---|
| Energy Efficiency Class | E |
| Energy Saving Product | Yes |
| Approval Marks | RoHS compliance CE marking KEMA Keur certificate |

| | |
|---|---------------|
| Energy Consumption kWh/1000 h | 18 kWh |
| EPREL Registration Number | 1932578 |
| CE mark | Yes |
| EU RoHS compliant | Yes |
| Flickering value (PstLM) - Flickering value as per EN 61000-3-3 | 1 |
| Stroboscopic effect visibility measure (SVM) | 0.4 |
| Ambient temperature range | -20 to +45 °C |

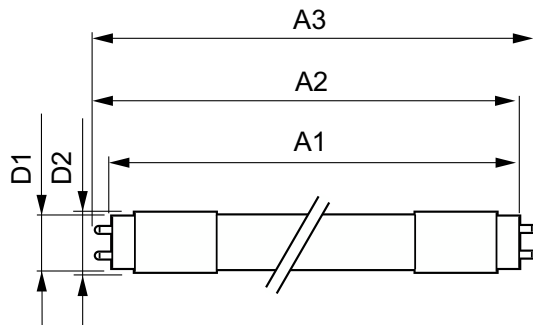
Application Conditions

| | |
|-------------------------------------|-----|
| can it be used in closed luminaires | Yes |
|-------------------------------------|-----|

Product Data

| | |
|---------------------------------|--|
| Order product name | CorePro LEDtube UN 1200mm HO 18W840 T8 |
| Full product name | CorePro LEDtube UN 1200mm HO 18W840 T8 |
| Full product code | 871869680168000 |
| Order code | 929001869302 |
| Material Nr. (12NC) | 929001869302 |
| Numerator - Quantity Per Pack | 1 |
| EAN/UPC - Product/Case | 8718696801680 |
| Numerator - Packs per outer box | 10 |
| EAN/UPC - Case | 8718696801697 |

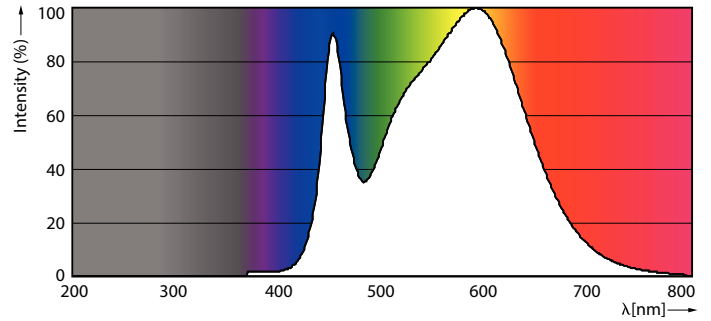
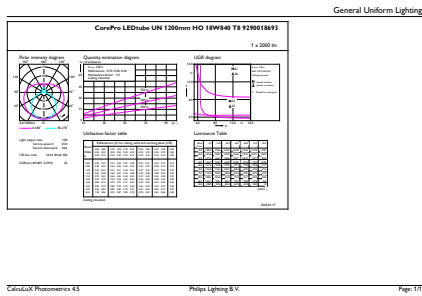
Dimensional drawing



| Product | D1 | D2 | A1 | A2 | A3 |
|--|---------|-------|------------|------------|------------|
| CorePro LEDtube UN 1200mm HO 18W840 T8 | 27.9 mm | 28 mm | 1,199.4 mm | 1,205.3 mm | 1,213.6 mm |

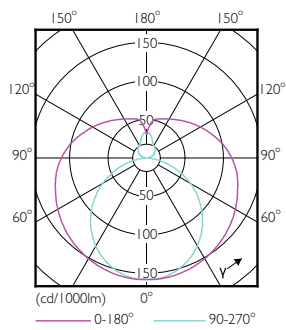
CorePro LED tube Universal T8

Photometric data



General uniform lighting - CorePro LEDtube UN 1200mm HO 18W840 T8

Spectral Power Distribution Colour - CorePro LEDtube UN 1200mm HO 18W840 T8

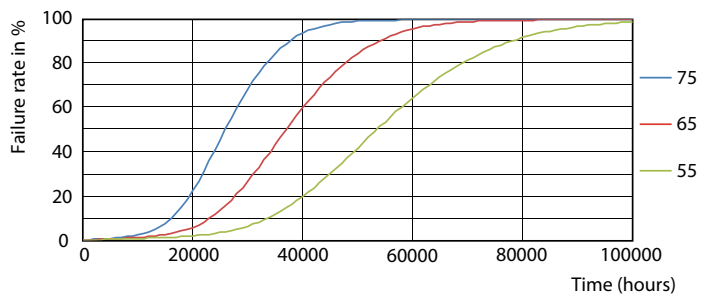


Light Distribution Diagram - CorePro LEDtube UN 1200mm HO 18W840 T8

Lifetime



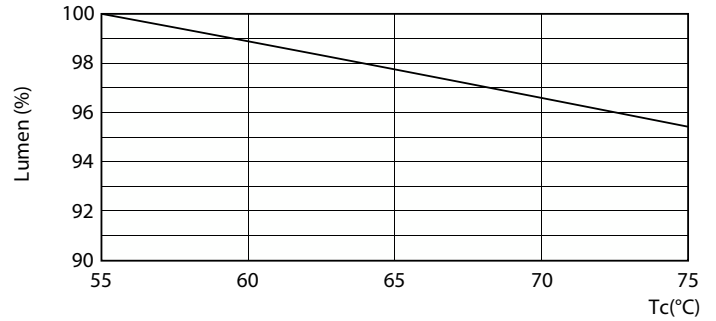
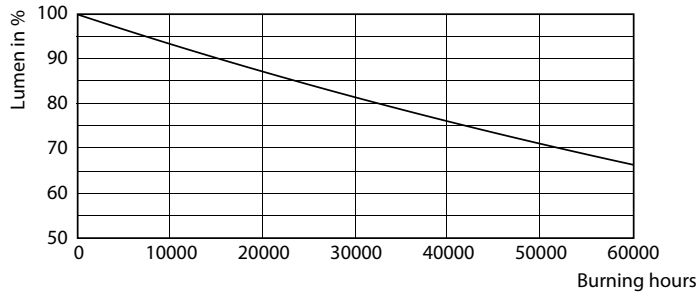
Life Expectancy Diagram



FailureRate

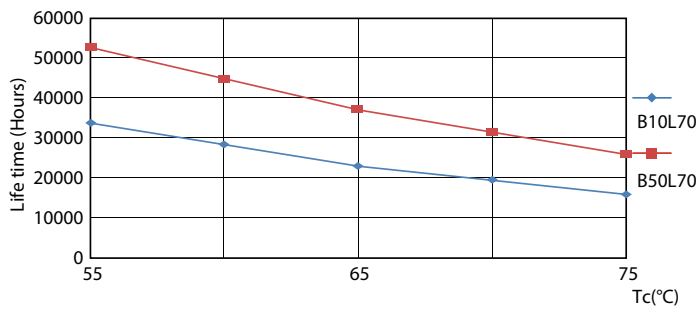
CorePro LED tube Universal T8

Lifetime



Lumen Maintenance Diagram - CorePro LEDtube UN 1200mm HO 18W840 T8

Lumen Maintenance Diagram - CorePro LEDtube UN 1200mm HO 18W840 T8



LifetimeVsTc

