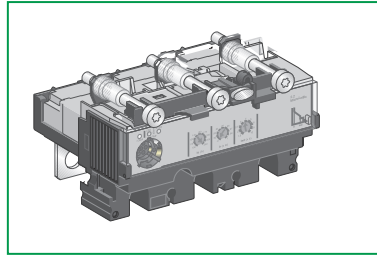


ComPact NSX100-250

MicroLogic 2.2/5.2/6.2 Trip Units
 Déclencheurs MicroLogic 2.2/5.2/6.2
 Unidades de control MicroLogic 2.2/5.2/6.2
 MicroLogic 2.2/5.2/6.2 脱扣单元



Schneider Electric

GHD16045AA-12

www.se.com



PLEASE NOTE

- Electrical equipment should be installed, operated, serviced, and maintained only by qualified personnel.
- No responsibility is assumed by Schneider Electric for any consequences arising out of the use of this material.

REMARQUE IMPORTANTE

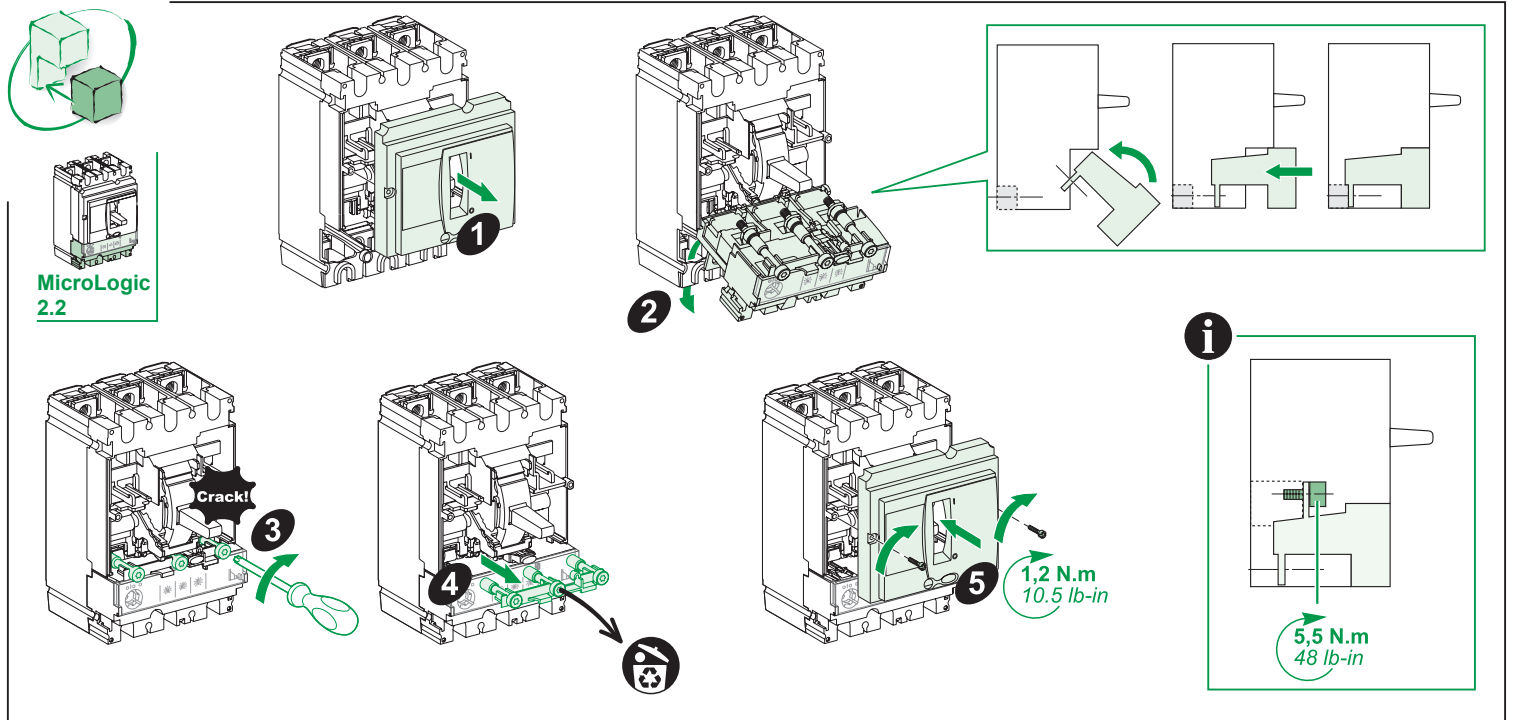
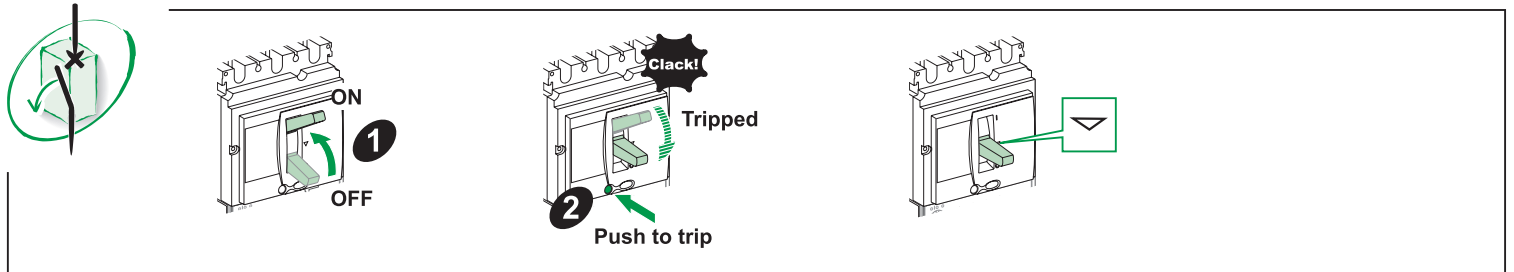
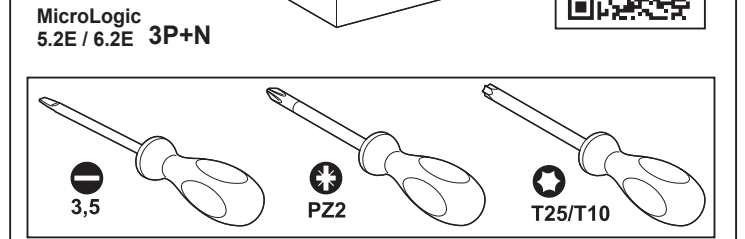
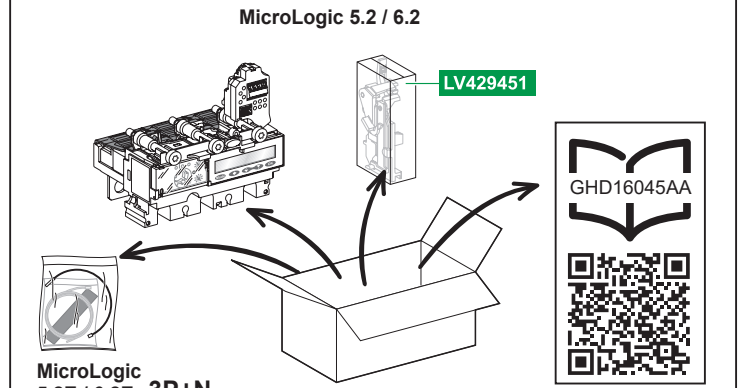
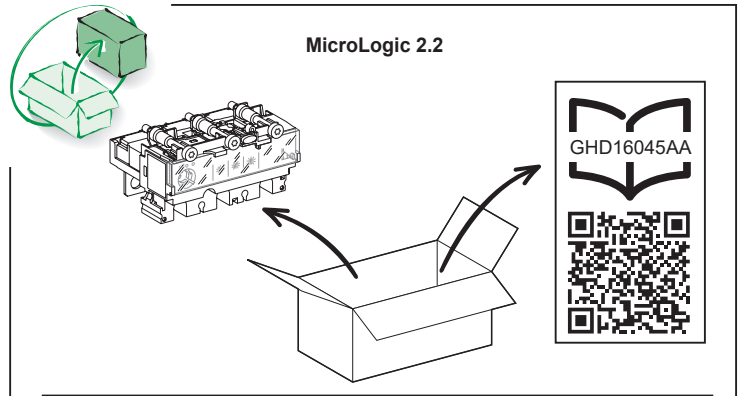
- L'installation, l'utilisation, la réparation et la maintenance des équipements électriques doivent être assurées uniquement par du personnel qualifié.
- Schneider Electric décline toute responsabilité quant aux conséquences de l'utilisation de ce matériel.

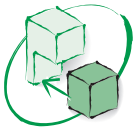
TENGA EN CUENTA

- La instalación, manejo, puesta en servicio y mantenimiento de equipos eléctricos deberán ser realizados sólo por personal cualificado.
- Schneider Electric no se hace responsable de ninguna de las consecuencias del uso de este material.

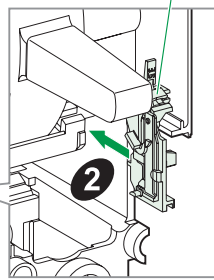
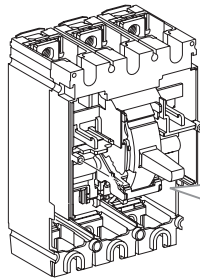
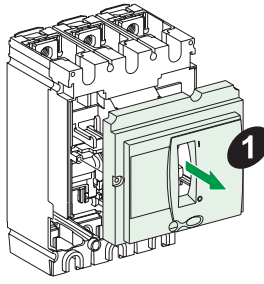
请注意

- 电气设备的安装、操作、维修和维护工作仅限于合格人员执行。
- Schneider Electric 不承担由于使用本资料所引起的任何后果。

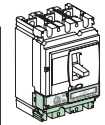
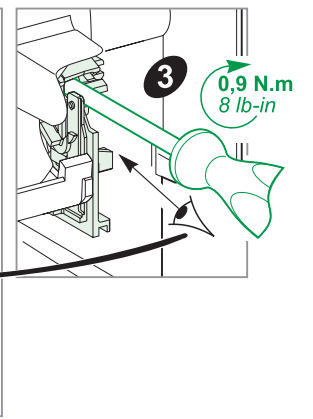
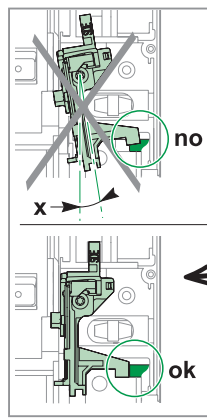




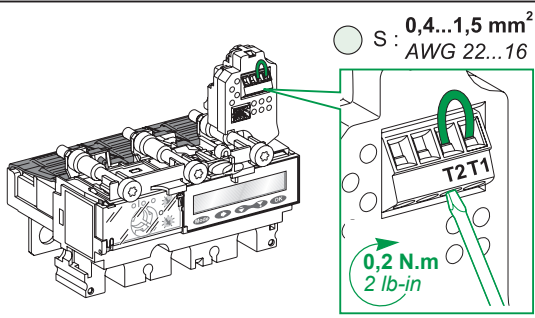
MicroLogic 5.2 / 6.2



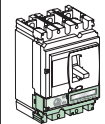
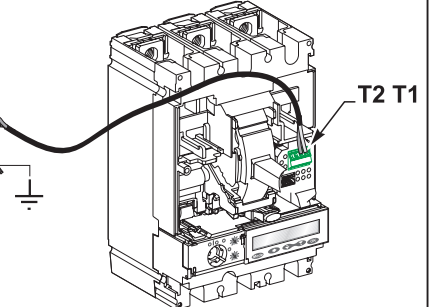
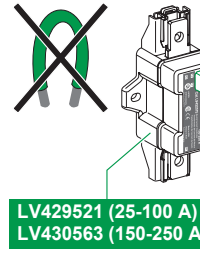
LV429451



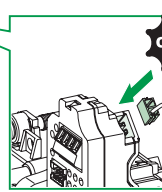
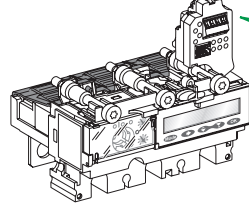
MicroLogic 3P 5.2 / 6.2



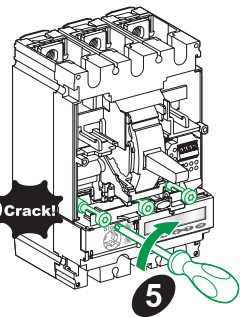
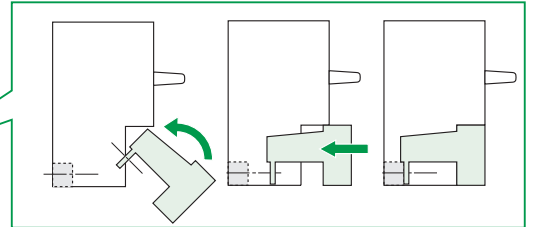
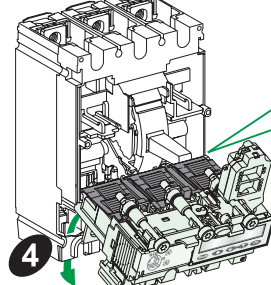
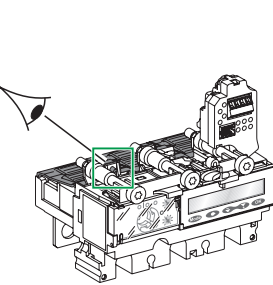
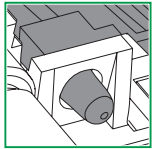
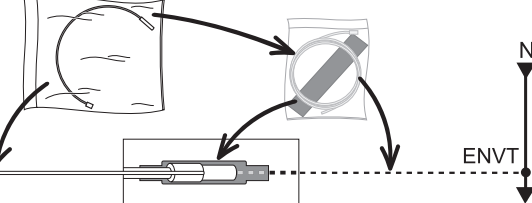
with ENCT



MicroLogic 5.2E / 6.2E

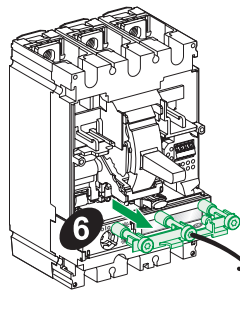


Click!

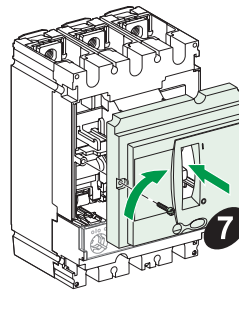


Crack!

5

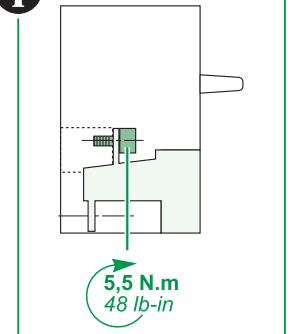


6

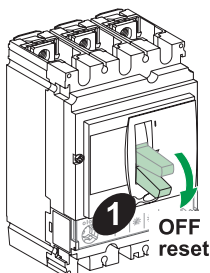


1,2 N.m
10.5 lb-in

7

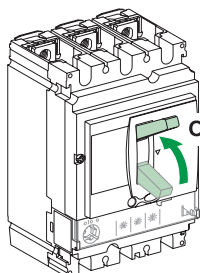


5,5 N.m
48 lb-in

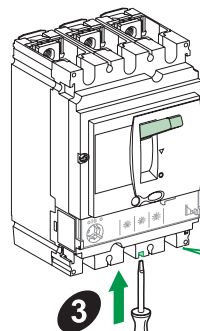


1 OFF reset

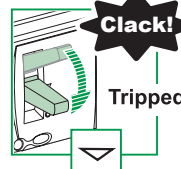
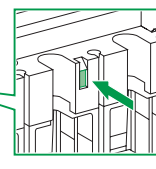
0



2

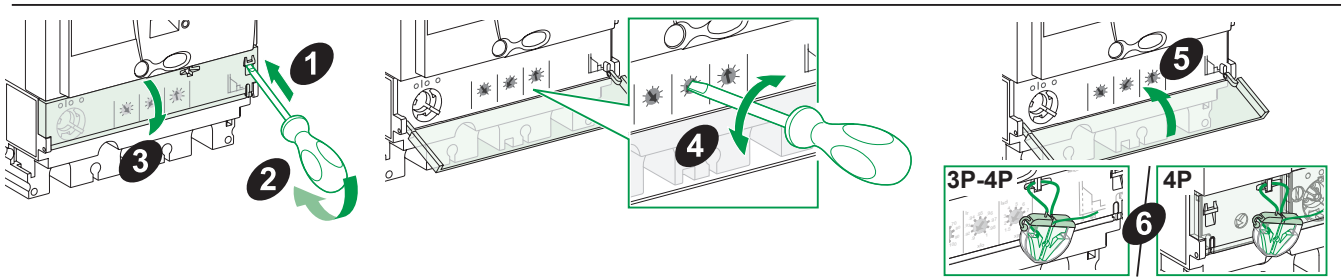


3

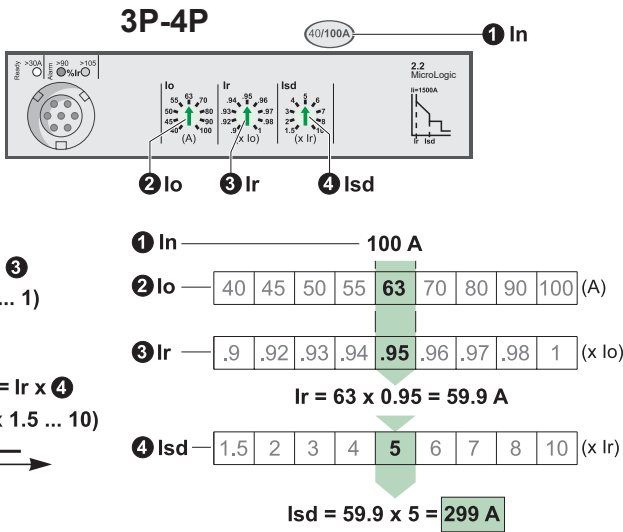


Click!

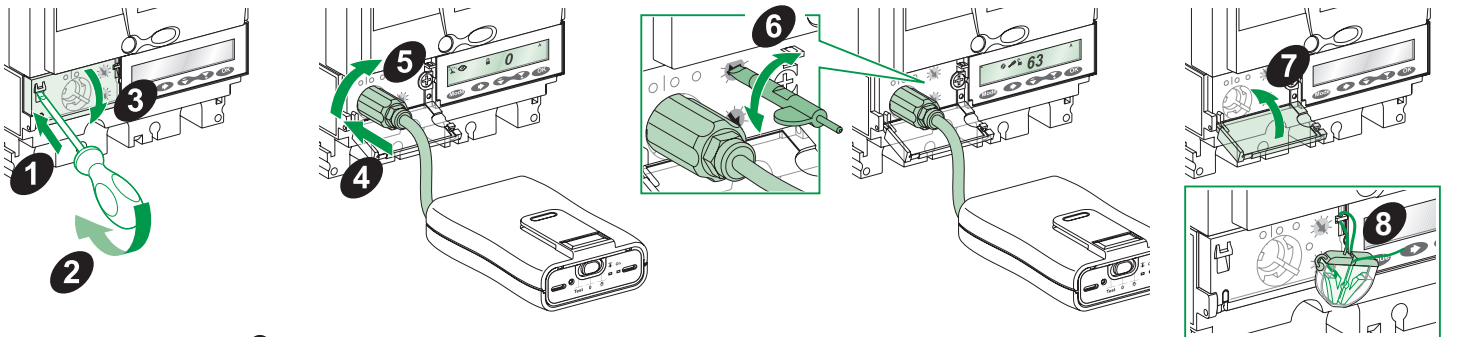
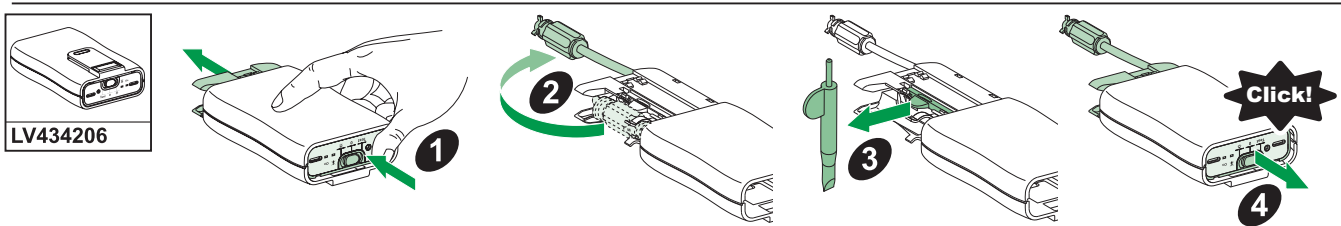
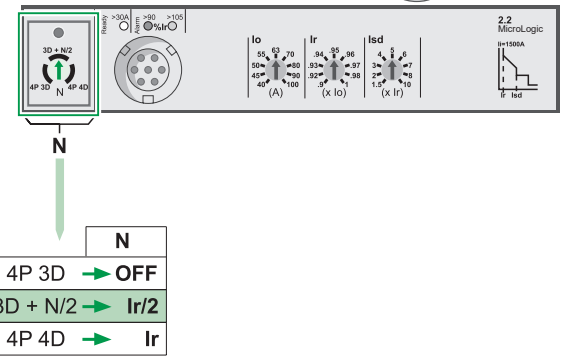
Tripped



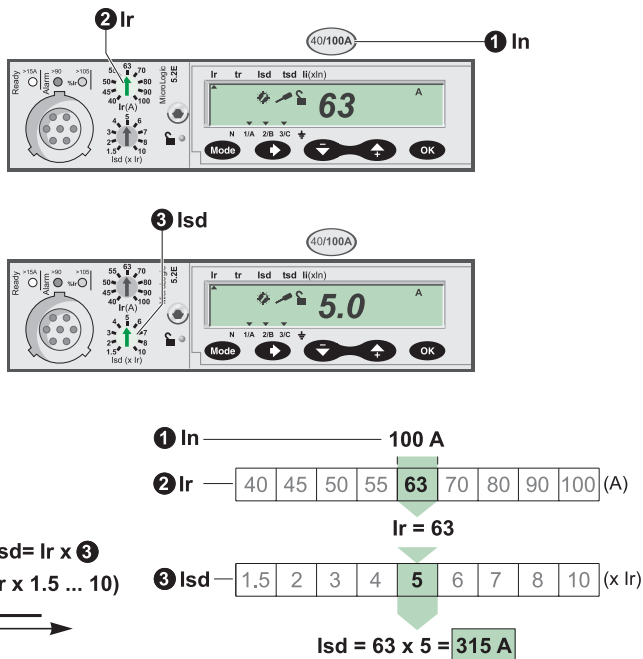
Ir, I_{sd}



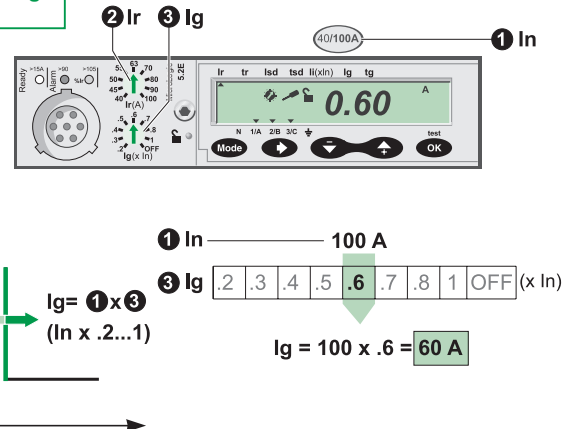
4P (40/100A)

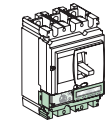


Ir, I_{sd}



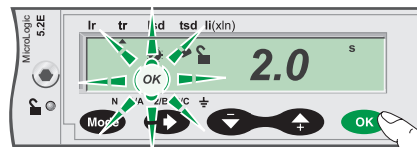
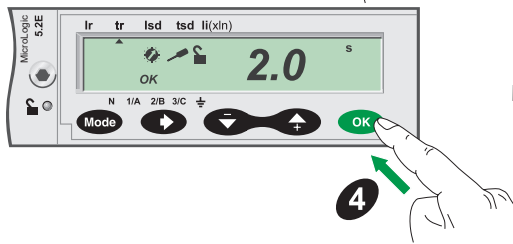
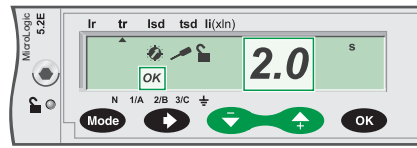
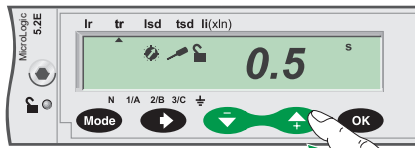
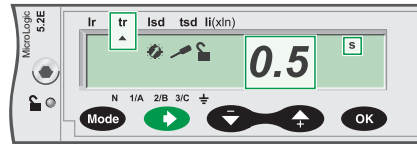
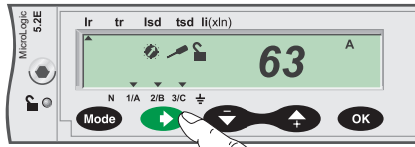
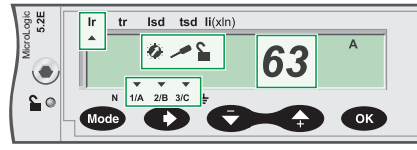
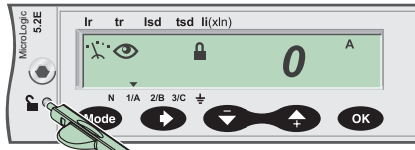
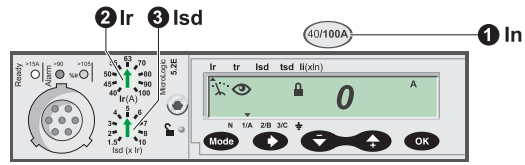
Ir, I_g





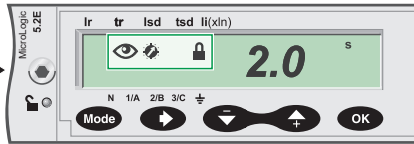
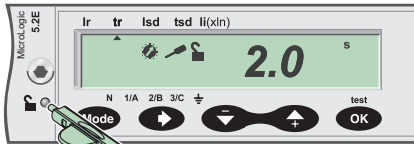
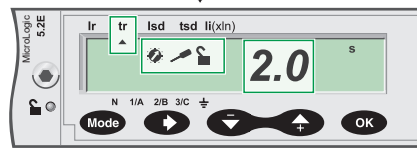
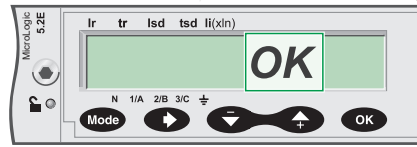
MicroLogic
5.2 / 6.2

5.2 Ir, tr, lsd, tsd, li
6.2 Ir, tr, lsd, tsd li, lg, tg
tr @ 6 Ir



MicroLogic User Guide

DOCA0141EN
DOCA0141FR
DOCA0141ES
DOCA0141ZH



Schneider Electric Industries SAS
35 rue Joseph Monier
CS 30323
F - 92506 Reuil Malmaison Cedex
www.se.com



Printed on recycled paper.

Schneider Electric Limited
Stafford Park 5
Telford, TF3 3BL
United Kingdom
www.se.com/uk

