



CorePro LEDtube InstantFit HF T5



CorePro LEDtube HF 1200mm HE 17.1W 865T5

CorePro LEDtube InstantFit HF T5 is the quick and easy way to replace T5 fluorescent tubes with a fast payback time. Designed with industry leading ballast compatibility, the product is ideal for your everyday lighting jobs. With simply plug-and-play installation, it improves energy efficiency immediately and lasts for longer than conventional T5.

Product data

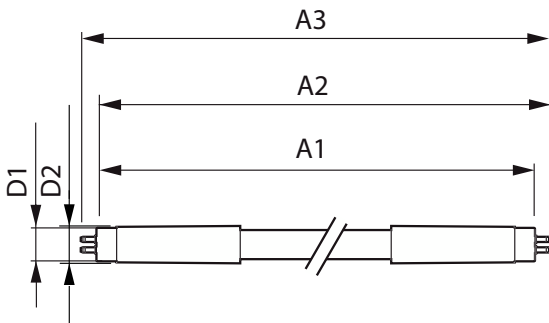
General Information		Operating and Electrical	
Cap-Base	G5	Input Frequency	30K to 100K Hz
Nominal lifetime	50,000 hour(s)	Power Consumption	17.1 W
Switching Cycle	50,000	Lamp Current (Max)	350 mA
Lighting Technology	LED	Lamp Current (Min)	150 mA
Flux measurement reference	Sphere	Starting Time (Nom)	0.5 s
		Warm-up time to 60% light	0.5 s
		Power Factor (Fraction)	0.9
		Voltage (Nom)	70-120 V
		LED alternative to fluorescent lamp power	28 W
		Inrush current at mains	-
		Max. lamp no. on MCB B type 10A - Mains	-
		Max. lamp no. on MCB B type 10A – EM ballast without Compensation Capacitor.	-
		Max. lamp no. on MCB B type 10A – EM ballast with Compensation Capacitor.	-
		Max. lamp no. on MCB B type 16A - Mains	-
		Max. lamp no. on MCB B type 16A – EM ballast without Compensation Capacitor.	-
Light Technical			
Color Code	865 [CCT of 6500K]		
Beam Angle (Nom)	200 degree(s)		
Luminous Flux	2,500 lm		
Luminous Efficacy (rated) (Nom)	146 lm/W		
Color Designation	Cool Daylight		
Correlated Color Temperature (Nom)	6500 K		
Color Consistency	<6		
Color rendering index (CRI)	80		
LLMF At End Of Nominal Lifetime (Nom)	70 %		
Photobiological safety according to EN 62471	RG0		

CorePro LEDtube InstantFit HF T5

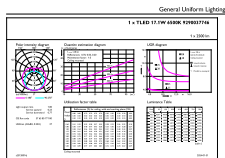
Max. lamp no. on MCB B type 16A – EM ballast with Compensation Capacitor.	-
Ballast Compatibility	HF
Temperature	
Ambient temperature range	-20 to +45 °C
T-Case Maximum (Nom)	45 °C
Controls and Dimming	
Dimmable	No
Mechanical and Housing	
Bulb Finish	Frosted
Bulb Material	Glass
Product Length	1,200 mm
Bulb Shape	T5
Approval and Application	
Energy Efficiency Class	D
Energy Saving Product	Yes
Approval Marks	RoHS compliance KEMA Keur certificate

Energy Consumption kWh/1000 h	18 kWh
EPREL Registration Number	1880100
CE mark	Yes
EU RoHS compliant	Yes
Product Data	
Order product name	CorePro LEDtube HF 1200mm HE 17.1W 865T5
Full product name	CorePro LEDtube HF 1200mm HE 17.1W 865T5
Full product code	872016929550600
Order code	929003774602
Material Nr. (12NC)	929003774602
Numerator - Quantity Per Pack	1
Net Weight (Piece)	0.160 kg
EAN/UPC - Product/Case	8720169295506
Numerator - Packs per outer box	10
EAN/UPC - Case	8720169295513

Dimensional drawing



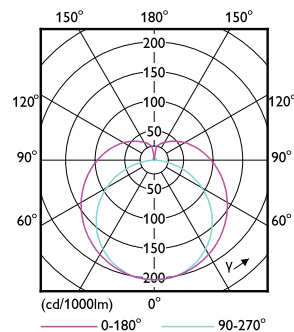
Photometric data



General uniform lighting - CorePro LEDtube HF 1200mm HE 17.1W 865T5

Product

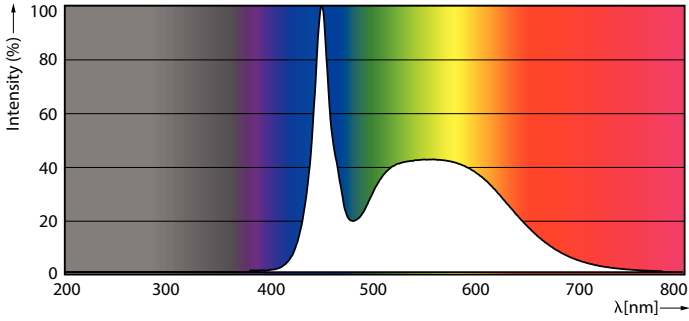
CorePro LEDtube HF 1200mm HE 17.1W 865T5



Light Distribution Diagram - CorePro LEDtube HF 1200mm HE 17.1W 865T5

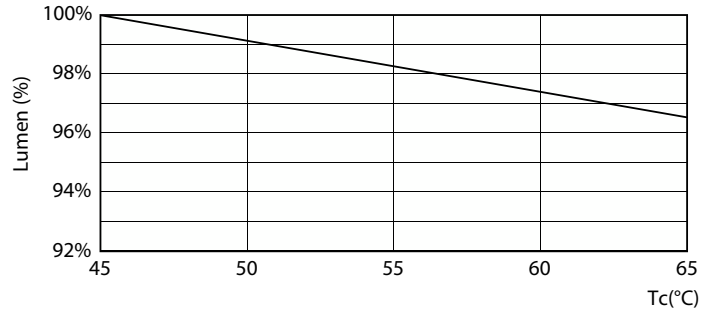
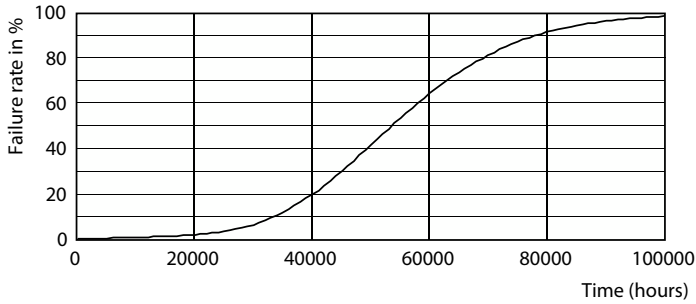
CorePro LEDtube InstantFit HF T5

Photometric data



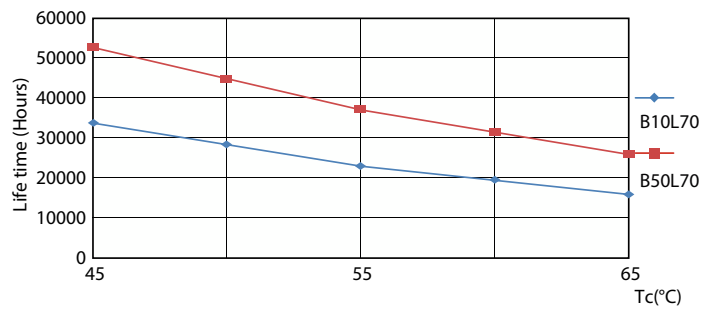
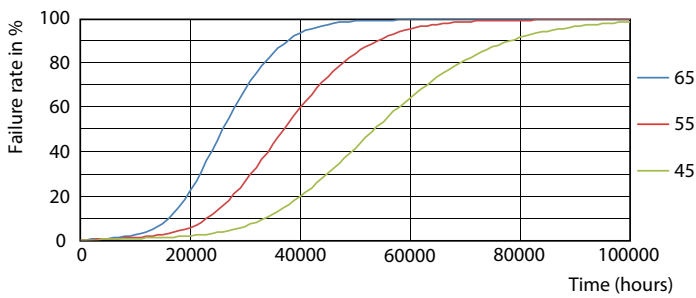
Spectral Power Distribution Colour - CorePro LEDtube HF 1200mm HE 17.1W 865T5

Lifetime



Life Expectancy Diagram

Lumen Maintenance Diagram - CorePro LEDtube HF 1200mm HE 17.1W 865T5

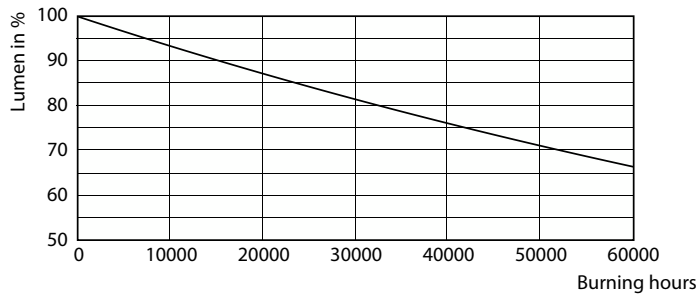


FailureRate

LifetimeVsTc

CorePro LEDtube InstantFit HF T5

Lifetime



Lumen Maintenance Diagram - CorePro LEDtube HF 1200mm HE 17.1W 865T5

