

# Product End-of-Life Instructions

**Product Range:** *ARGUS Presence*

**Marketing Model/Name:** (List of multiple models if applicable)  
*MTN550590, MTN550591, 550590, 55059*

## **Purpose:**

The product family must be disposed according to the legislation of the country. This document is intended for use by end of life recyclers or treatment facilities. It provides the basic information to assure an appropriate end of life treatment for the components and materials of the product.

## **Note :**

This product family is in the scope of EU directive 2002/96/EC, Waste Electrical and Electronic Equipment (WEEE).



Size in mm:

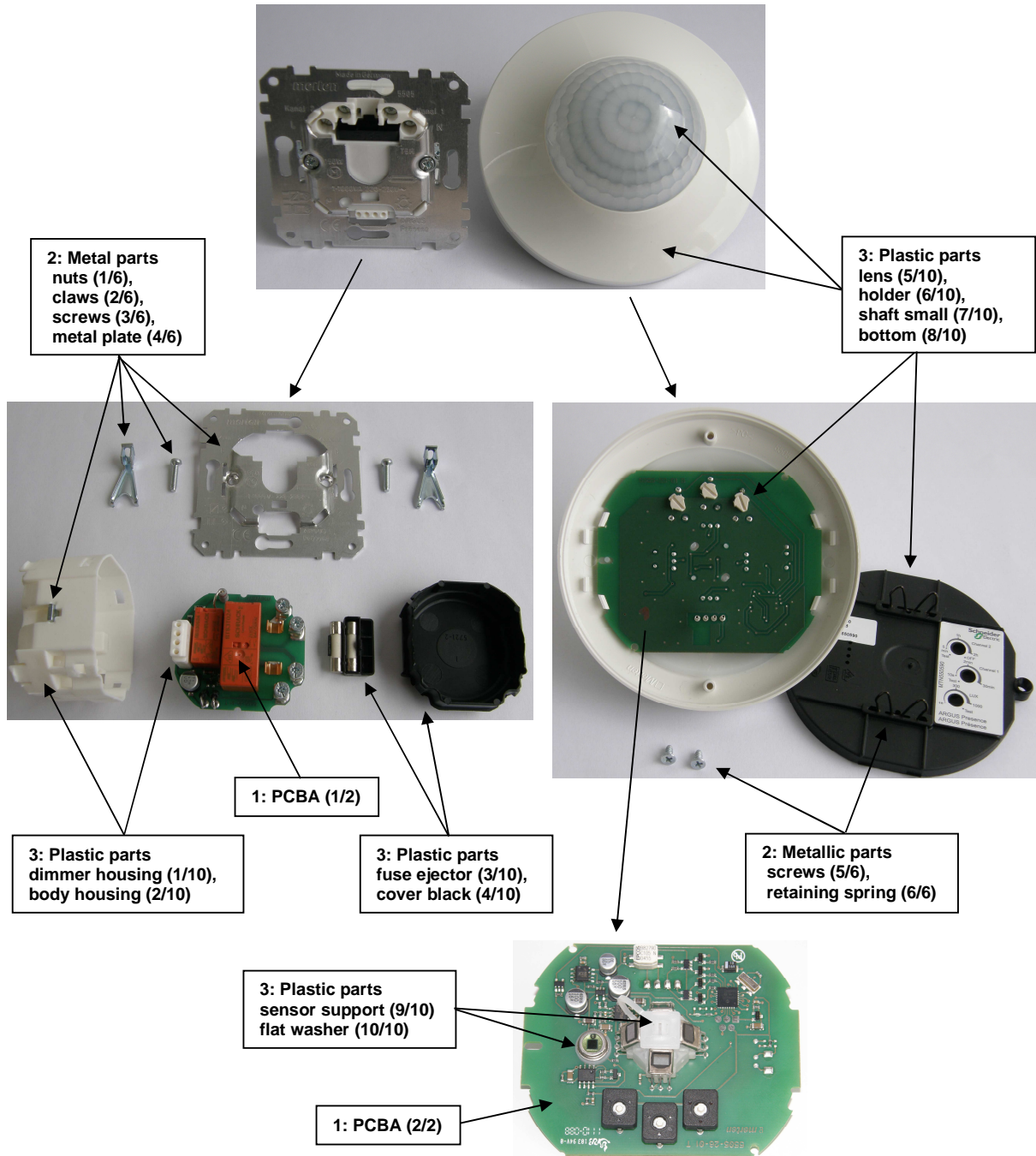
**Ø x H in mm: 105 x 72**

**Weight in g: 313.73**

## Operations recommended for the end of life treatment

There are several steps to process the products at the end of life so as to recover components, materials or energy :  
 Reuse → Separation for special treatment → Other dismantling → Shredding.

The components of the products that optimize the recycling performances are listed, identified and located hereunder.



*Use the appropriate items and suppress the others.*

Recommendation	Number on drawing	Components	Weight (g)	Comment
Operating hazards				
Reuse				
Special treatment	1	Printed circuit board	2x 61	
	2	Metal parts	6x 16	
	3	Plastic parts	10x 58	
Other dismantling				

**Schneider Electric SA**

43-45, boulevard Franklin Roosevelt  
F-92500 Rueil-Malmaison Cedex (France)  
Tel.: +33 (0) 1 41 29 70 00  
www.schneider-electric.com

The version of the Guide used to create the document: End of Life  
Instruction Drafting Guide of Schneider Electric version V2

ENVEOL111017EN

Publication date : 09/11/2018