

Spectrum Test Report

Sample :
Specification : 250W FC2 3000K
Sample No. : 01
Manufacturer :
Remark :
Device SN :

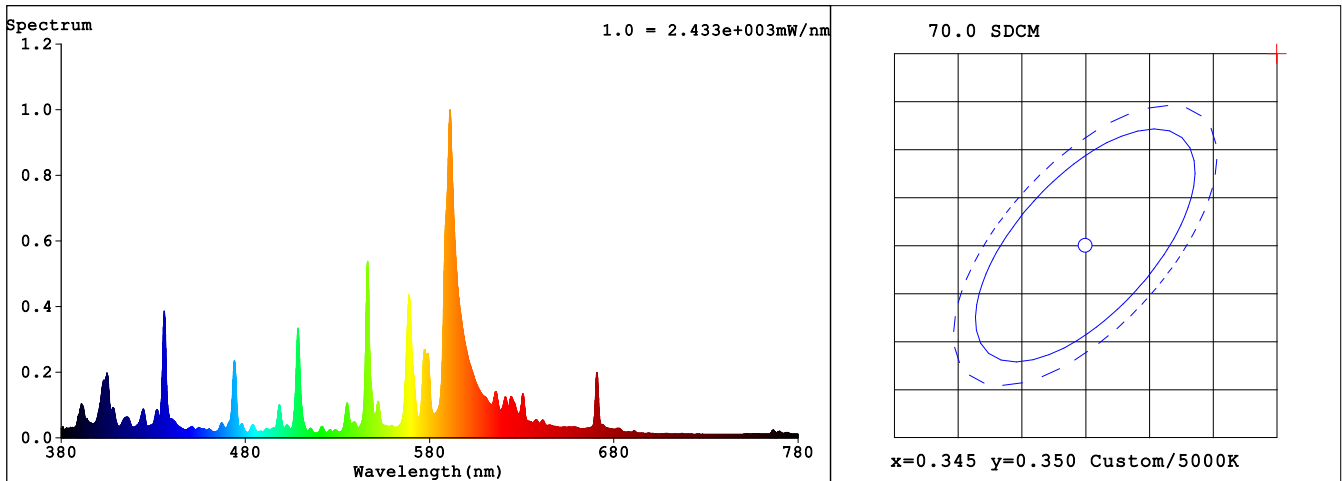
Date : 2024-06-14 14:12:44
Sam. Status :
Standard :
Instrument :
Test by :

Test Condition

Temperature : 25.3Deg
WL Range : 380nm-780nm
Test Mode : Fast Test
Sensitivity : High

RH : 65.0%
IP : 51072 (78%)
T : 152 ms

Spectrum



Colorimetric Parameters

Chromaticity Coordinate: $x = 0.4533$ $y = 0.3893$ / $u' = 0.2680$ $v' = 0.5179$ ($duv = -7.52e-03$)

CCT= 2622K Prcp WL: $L_d = 587.5\text{nm}$ Purity=52.9%

Peak WL: $L_p = 591\text{nm}$ FWHM: =6.9nm Ratio:R=14.7% G=83.1% B=2.1%

Render Index: $R_a = 46.5$

EEL: 0.14301 A+

R1 =36 R2 =80 R3 =69 R4 =30 R5 =42 R6 =78 R7 =39

R8 =0 R9 =0 R10=64 R11=26 R12=68 R13=49 R14=80 R15=11

LEVEL:OUT WHITE:OUT

Photometric & Radiometric Parameters

Flux = 24860 lm Eff. : 95.25 lm/W $F_e = 73.564\text{ W}$

Flux of emitted photons($\mu\text{mol/s}$):342.96 Fluo. and blue light ratio:2.658 Fluorescent eff.:187.7

A: $2.3635e+003\text{mW}$

B: $7.3564e+004\text{mW}$

Photosynthetic:PPF(400-700nm):320.31 $\mu\text{mol/s}$ PRF(400-700nm):68788mW

Eff(PPF) (400-700nm):1.23 $\mu\text{mol/s/W}$

Electrical parameters

V = 95.40 V I = 2.985 A P = 261.0 W PF = 0.9165 F=50.00 Hz