

Product End of Life Instructions

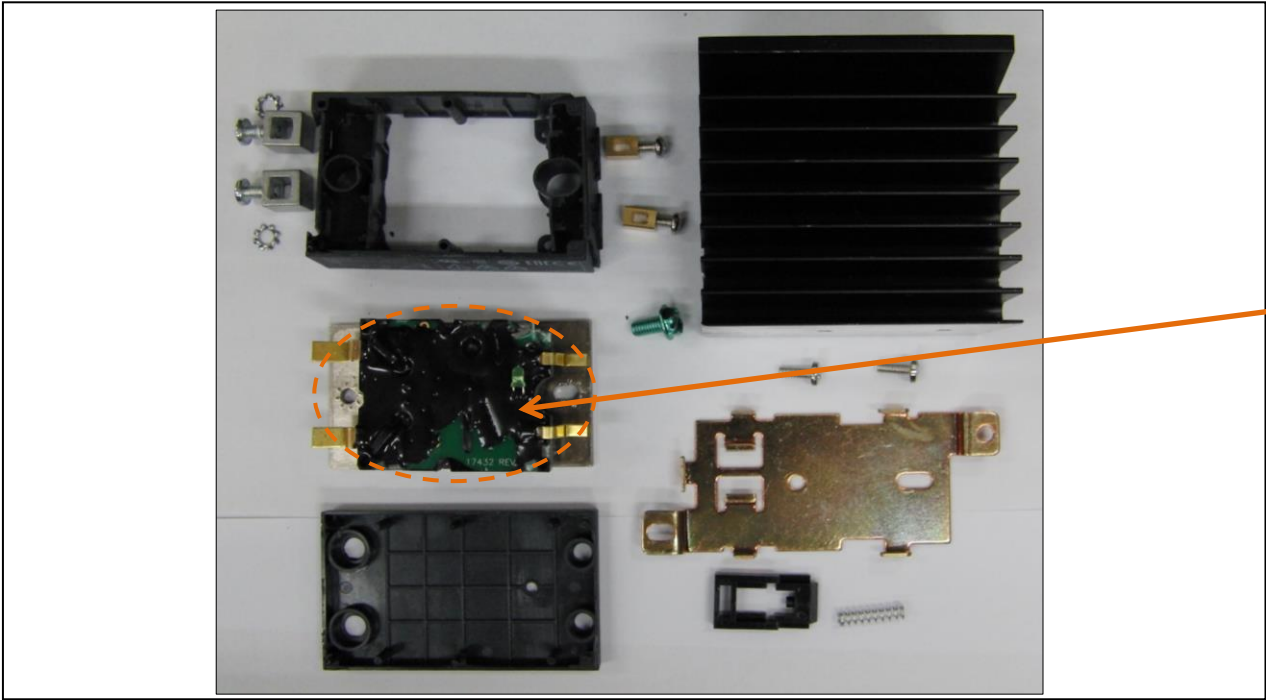
Modular DIN rail Solid State Relay

Harmony Relay





End of Life Instructions



Recommendation	Number on drawing	Component / Material	Weight (in g)	Comment
To be depolluted	1	Electronic Board (Power) > 10cm ²	7,54	



Product description

Manufacturer identification	Schneider Electric Industries SAS
Brand name	Schneider Electric
Product function	SSM1, SSM3 and SSD1 modular DIN rail Solid State Relay products are compact and offer greater power density. The main purpose is to serve as an electronic switching device, in which a small control signal controls a larger load of current or voltage. It employs semiconductor switching elements and has no movable contacts.
Product reference	SSM1A455BD

Additional similar product references	SSM1A455BD SSM1A120BD SSM1A120M7 SSM1A130BD SSM1A130M7 SSM1A145BD SSM1A145F7 SSM1A430BD SSM1A430M7 SSM1A445F7 SSM1A455BD SSM1A455F7 SSD1A320BDC1 SSD1A320BDC2 SSD1A320BDC3 SSD1A320BDRC1 SSD1A320BDRC2 SSD1A320BDRC3 SSD1A320M7C1 SSD1A320M7C2 SSD1A320M7C3 SSD1A320M7RC1 SSD1A320M7RC2 SSD1A320M7RC3 SSD1A335BDC1 SSD1A335BDC2 SSD1A335BDC3 SSD1A335BDRC1 SSD1A335BDRC2 SSD1A335BDRC3 SSD1A335M7C1 SSD1A335M7C2 SSD1A335M7C3 SSD1A335M7RC1 SSD1A335M7RC2 SSD1A335M7RC3 SSD1A345BDC2 SSD1A345BDC3 SSD1A345BDRC2 SSD1A345BDRC3 SSD1A345M7C2 SSD1A345M7C3 SSD1A345M7RC2 SSD1A345M7RC3 SSD1A360BDC2 SSD1A360BDC3 SSD1A360BDRC2 SSD1A360BDRC3 SSD1A360M7C2 SSD1A360M7C3 SSD1A360M7RC2 SSD1A360M7RC3 SSD1D520BDC1 SSD1D530BDC1 SSDZLB SSDZLN1 SSDZLN2 SSM3A325BD SSM3A325BDR SSM3A325F7 SSM3A325P7 SSR210DIN-AC22 SSR210DIN-AC22R SSR210DIN-DC22 SSR210DIN-DC22R SSR220DIN-AC22 SSR220DIN-DC22 SSR230DIN-AC22 SSR230DIN-DC22R SSR230DIN-DC22 SSR245DIN-AC45 SSR245DIN-DC45 SSR310DIN-DC22 SSR320DIN-DC22 SSR330DIN-DC22 SSR610DIN-AC22 SSR610DIN-AC22R SSR610DIN-DC22 SSR610DIN-DC22R SSR620DIN-AC22 SSR620DIN-DC22 SSR630DIN-AC22R SSR630DIN-DC22 SSR630DIN-DC22R SSR645DIN-AC45 SSR645DIN-DC45 SSR665DIN-AC45 SSR665DIN-DC45
Total representative product mass	480 g
Representative product dimensions	45.5mm x 98.9mm x 106.7mm
Date of information release	12/2019

Additional information

Legal information	This product family is in the scope of European Union directive 2012/19/EU on Waste Electrical and Electronic Equipment (WEEE). The product family must be disposed according to the legislation of the country. This document is intended for use by end of life recyclers or treatment facilities. It provides the basic information to assure an appropriate end of life treatment for the components and materials of the product.	
Recyclability potential	75%	Based on "ECO'DEEE recyclability and recoverability calculation method" (version V1, 20 Sep. 2008 presented to the French Agency for Environment and Energy Management: ADEME).

Schneider Electric Industries SAS
Country Customer Care Center
<http://www.schneider-electric.com/contact>

35, rue Joseph Monier
CS 30323
F- 92506 Rueil Malmaison Cedex
RCS Nanterre 954 503 439
Capital social 896 313 776 €

www.schneider-electric.com

Published by Schneider Electric

ENVEOLI1508007EN_V3

© 2019 - Schneider Electric – All rights reserved

12/2019