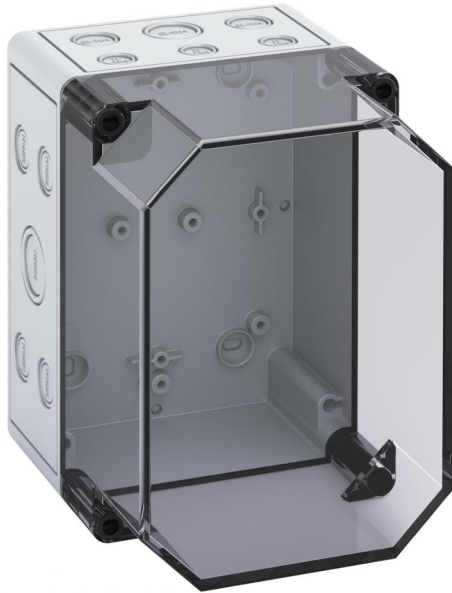


Empty enclosure

# TK PC 1813-16-tm



## TK PC 1813-16-tm

Empty enclosure

**CUSTOMIZABLE**

Productnumber: 13801601

Dimensions: 180 x 130 x 165 mm

Empty enclosure, with protection class IP66, Polycarbonate, certified according to DLG (Ammonia resistance), UL (UL 50 & CSA 22.2 No. 94.1-07, UL 50E & CSA C22.2 No. 94.2-07), DNV (Class: Ships and Offshore Installations), Ui=690V AC, Ui=1000V DC, Internal fastening points, for installations in the industrial arena and protected outside areas

**Box: Polycarbonate, grey, Lid: Polycarbonate, transparent, Push-out membranes, M12/M16/M20/M25/M32, (23 Side)**



## Technical Data

### electrical characteristics

Rated insulation voltage AC:	690 V
Rated insulation voltage DC:	1000 V
Protection class:	II
Type of protection:	IP66
UL Type Rating:	4X, 12/12K

### Colours

Base unit colour:	grey
Cover colour:	transparent

### Dimensions

Width:	180 mm
Length:	130 mm
Height:	165 mm

### Material characteristics

suitable for exterior use:	yes
Industry quality:	yes
Halogen free:	yes
Flammability class according with UL94:	V2
Glow-wire flammability according to EN 60695-2-11:	960 °C

### mechanical properties

Type of fastening:	Wall/ceiling mounting
Impact strength:	IK08
Sealable:	yes
Cover screw torque:	1.2 Nm
Stackable:	yes
Type of top part:	Cover

### Ambient conditions

max. relative humidity 25°C:	95 %
max. relative humidity 40°C:	50 %
Min. ambient temperature:	-35 °C
Max. ambient temperature:	80 °C
24h ambient temperature:	60 °C

### Material

Base unit material:	Polycarbonate
Cover material:	Polycarbonate
Sealing material:	Polyurethane
Cover screw material:	Polyamide, glass-fibre reinforced

### Certificates

Test mark:	DLG (Ammonia resistance)
Test mark:	UL (UL 50 & CSA 22.2 No. 94.1-07, UL 50E & CSA C22.2 No. 94.2-07)
Test mark:	DNV (Class: Ships and Offshore Installations)

## Accessories

[19000101 - HBA - Mounting material](#)

[19000501 - ASS-gro - External hinge set](#)

[19400101 - TK ABL - External fixing lugs kit](#)

[19501101 - TK MPI-1813 - Mounting plate](#)

[19701101 - TK MPS-1813 - Mounting plate](#)

[19715401 - TS 15-154 - Standard rail](#)

[19814401 - NS 35-144 - Standard rail](#)

## Cable gland

