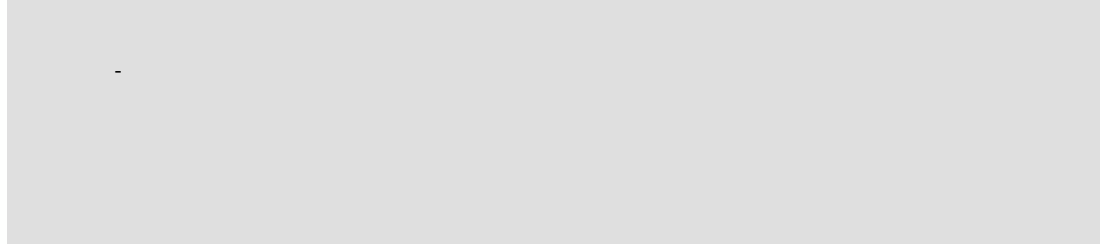


Product Data Sheet

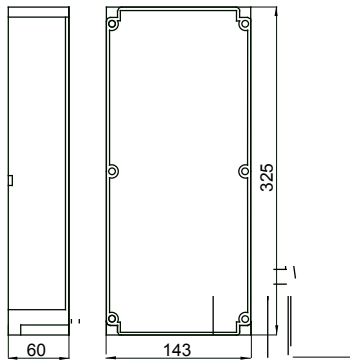
GW66685

IB Range



| | | | |
|----------------------------|--------|-----------------------------|--------------|
| IP degree | IP66 | Mechanical resistance | > IK10 |
| Houseable interloc. socket | 1 | Houseable IB socket-outlets | 16/32 A SELV |
| Glow Wire Test | 850 °C | Suitable for | Heavy duty |
| Electrocod | 2222 | Impact resistance at -20 °C | 20 J |

DIMENSIONAL



TECHNICAL SYMBOLOGY

IP **IK** **GWT**

IP66

> IK10

850 °C

STANDARDS/APPROVALS

